



Quick Start Guide

NVR

Contents

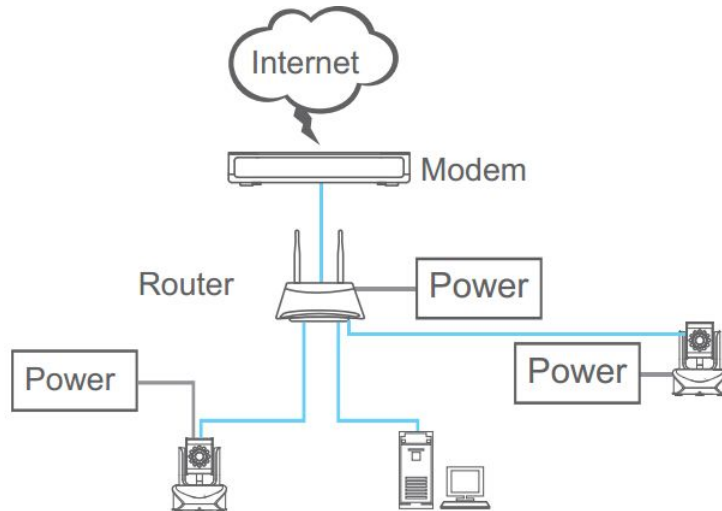
1. Network Connection.....	2
1.1 Wired Connection.....	2
2. Get the IP Address.....	2
2.1 Connect the NVR.....	2
3. IE Browser.....	3
3.1 Open IE Browser.....	3
3.2 View the image through IE Browser.....	4
3.3 Download QuickTime Player.....	5

1. Network Connection

Before you start:

Please choose proper connection mode according to camera model.

1.1 Wired Connection



Notes:

Please connect the camera and the DVR with the same LAN.

2. Get the IP address

2.1 Connect the NVR

1. Open the NVR, and setup the NVR.
2. Get the IP address of the NVR, the default IP address is 192.168.1.11.



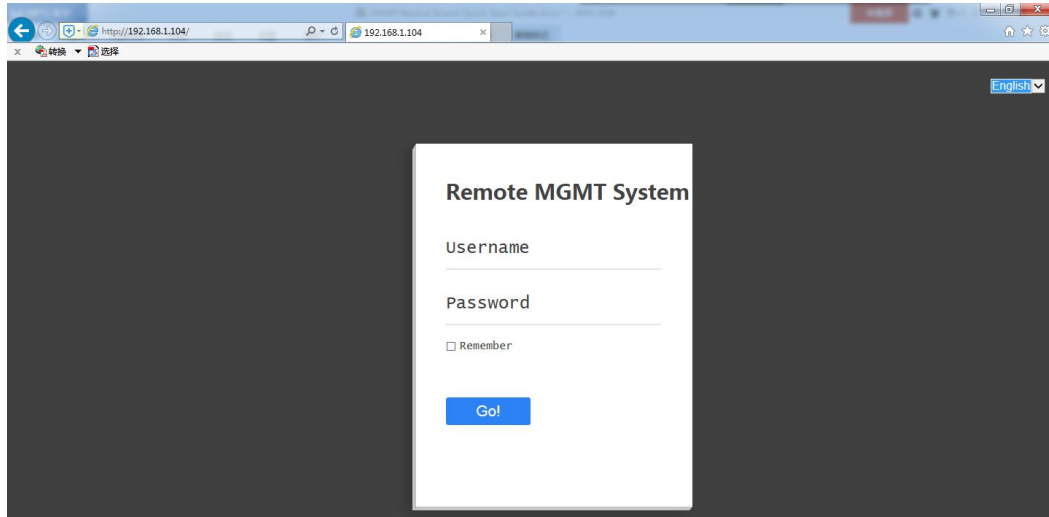
3. IE Browser

3.1 Open IE Browser

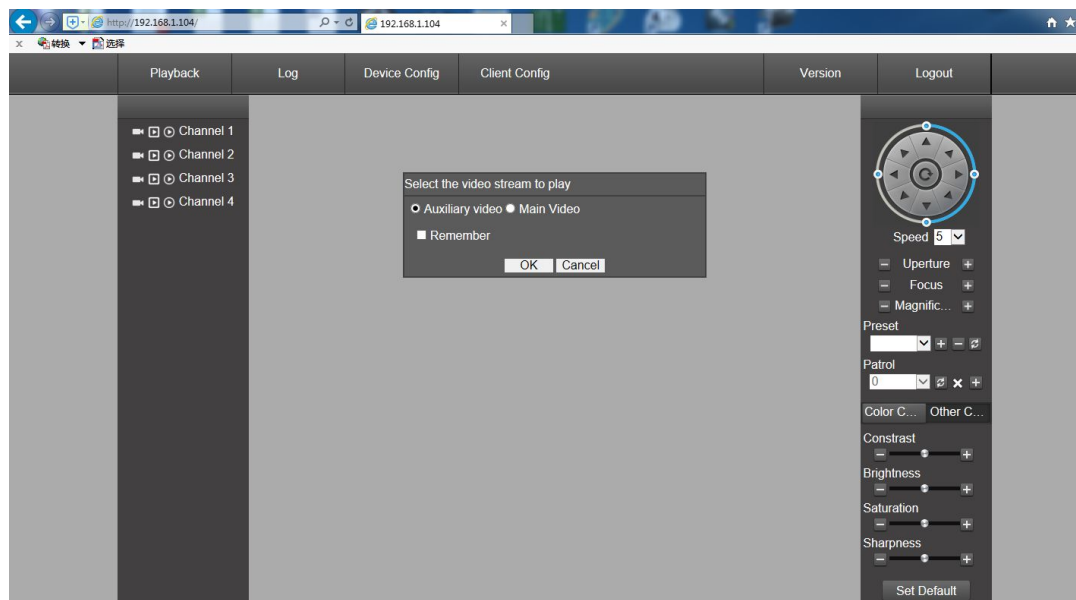
Notes:

Open the IE browser, input the IP address of the NVR.

The default Username is admin, default password is 123456.



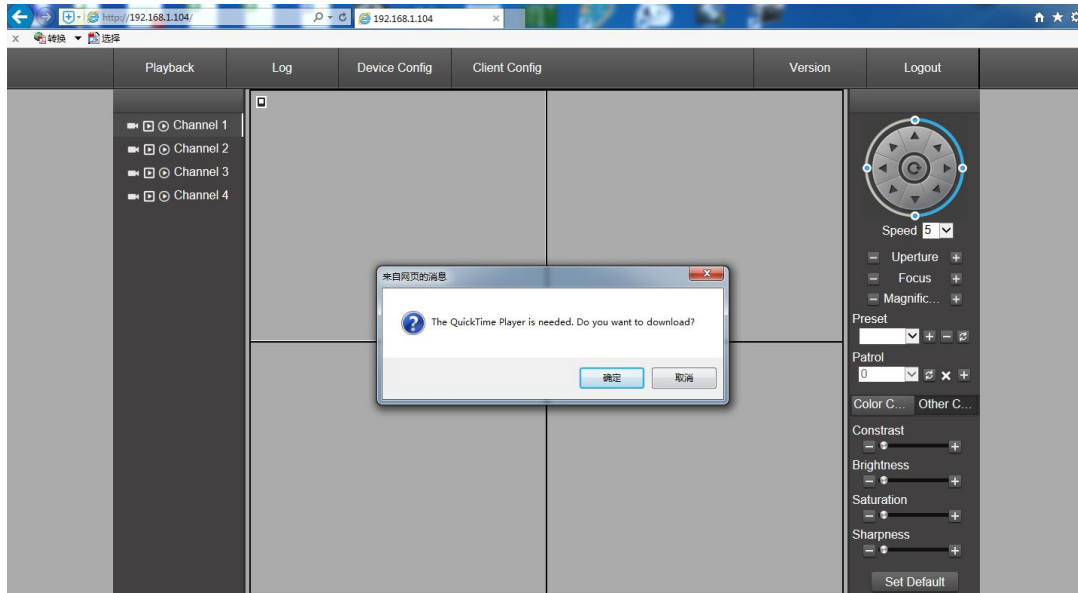
3.2 View the image through IE Browser



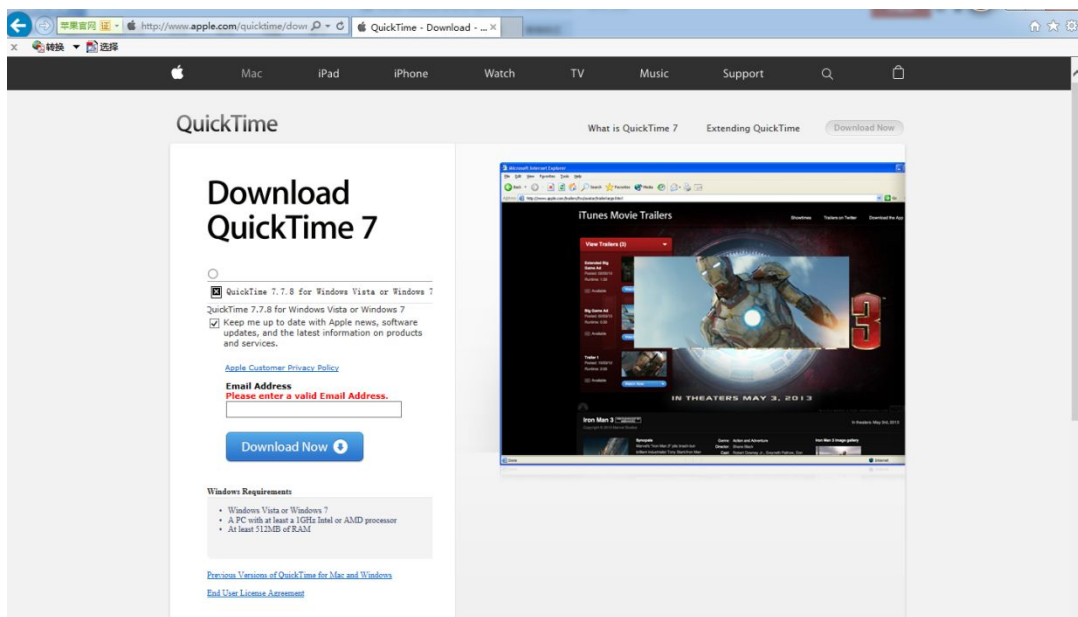
3.3 Download QuickTime Player

Notes:

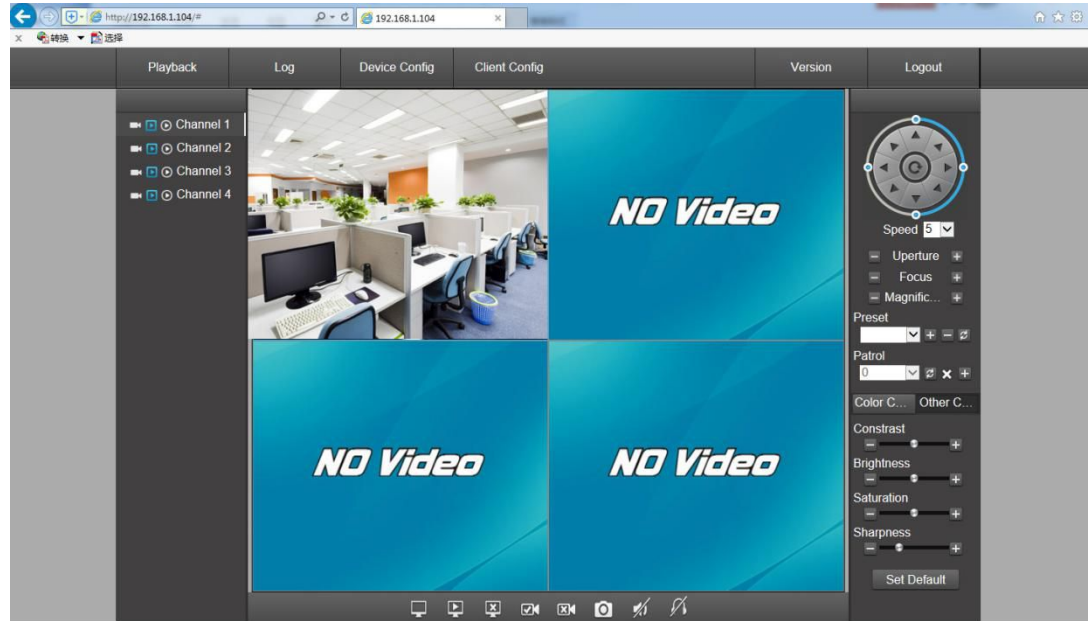
If it comes the sentence of : The QuickTime Player is needed. Do you want to download?
Please click “Yes” to download it.



Input a valid email address to download the QuickTime Player.



Click "OK" to view the image.



The operation of Device Config can refer to the Device Config of the NVR.

