

# Network Video Recorder Quick Start Guide

# Contents

Important Safeguards and Warnings.....	2
1. Hardware Installation and Connection.....	2
1.1. Before You Start.....	3
1.2. HDD Installation.....	3
2. Interface Instruction.....	4
2.1. Live-View Icon.....	4
2.2. Menus.....	5
3. Startup and Power off.....	6
3.1. Boot up.....	6
3.2. Login.....	6
3.3. Startup Wizard.....	6
3.4. Power off.....	10
4. Simple GUI Operation.....	10
4.1. Network Camera Management.....	10
4.2. Recording and Playback.....	11
4.2.1. Recording.....	11
4.2.2. Playback.....	12
4.3. Network Setup.....	14
4.4. PTZ.....	15
4.5. Video Adjust.....	16
4.6. Alarm Settings.....	16
4.6.1. Alarm E-mail.....	16
4.6.2. Motion Detect.....	18
4.6.3. Video Lost Alarm.....	20
4.6.4. Alarm/PTZ Device.....	22
4.6.5. Alarm Task.....	24
4.7. Account Management.....	24
5. CloudSEE Remote Connection.....	25
5.1. Get CloudSEE ID.....	25
5.2. Connect NVR with CloudSEE.....	26
5.3. Connect NVR with Smart Phone.....	28

# Important Safeguards and Warnings

## 1. Electrical Safety

All installation and operation here should conform to your local electrical safety codes. We assume no liability or responsibility for all the fires or electrical shock caused by improper handling or installation.

## 2. Transportation security

Heavy stress, violent vibration or water splash are not allowed during transportation, storage and installation.

## 3. Installation

Keep upwards. Handle with care.

Do not apply power to the NVR before completing installation.

Do not place objects on the NVR

## 4. Qualified engineers needed

All the examination and repair work should be done by the qualified service engineers.

We are not liable for any problems caused by unauthorized modifications or attempted repair.

## 5. Environment

The NVR should be installed in a cool, dry place away from direct sunlight, inflammable, explosive substances and etc. This series product shall be transported, storage and used in the environment ranging from 0°C to 50 °C

## 6. Accessories

Be sure to use all the accessories recommended by manufacturer.

Before installation, please open the package and check all the components are included.

Contact your local retailer ASAP if something is broken in your package.

## 7. Lithium battery

Improper battery use may result in fire, explosion, or personal injury!

When replace the battery, please make sure you are using the same model!

**Before your operation please read the following instructions carefully.**

### **Installation environment**

- Keep away from extreme hot places and sources;
- Avoid direct sunlight;
- Keep away from extreme humid places;
- Avoid violent vibration;
- Do not put other devices on the top of the NVR;
- Be installed in well ventilated place; do not block the vent.

# 1. Hardware Installation and Connection

**Note: All the installation and operations here should conform to your local electric safety rules.**

## 1.1. Before You Start

When you receive the NVR from the forwarding agent, please check whether there is any visible damage. The protective materials used for the package of the NVR can protect most accidental clashes during transportation. Then you can open the box to check the accessories.

Please check the items in accordance with the list.

Finally you can remove the protective film of the NVR.

Please check the data cable, power cable, COM cable and main board cable connection is secure or not.

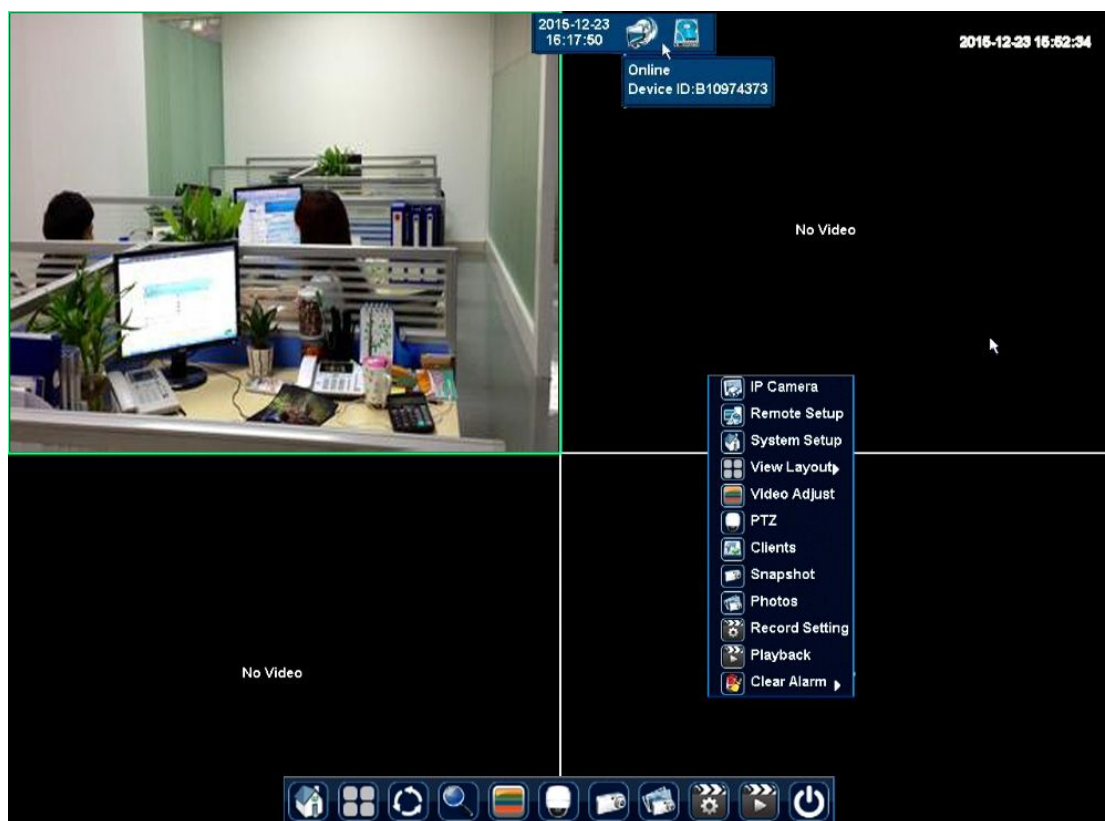
## 1.2. HDD Installation

- 1.Ensure Power supply has been disconnected, open the case cover;
- 2.Connect HDD data line, power line first , then fix the HDD in the case;
- 3.Install the cover, connect the power, which with adaptor, press the power switch;
- 4.Formatting the HDD

## 2.Interface Instruction


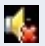




Connect the device to the monitor and then connect a mouse and power cable. Click the power button and then boot up the device to view the video output. You can use the mouse to implement some simple GUI operation.

After device booted up, the system is in multiple-channel display mode. Please note the displayed window amount may vary. The following figure is for reference only.



### 2.1 Live-View Icon

There will be some icons showing on the channel live view window, which indicate the channel recording or alarming status. You can refer to the following sheet for channel recording or alarming status information.

Live-View Icon	Instruction	Live-View Icon	Instruction
	Recording...		Audio monitoring not enabled
	Connected by remote client		Audio monitoring enabled
	Alarm set, not triggered		Alarming...

## 2.2 Menus

### Main menu

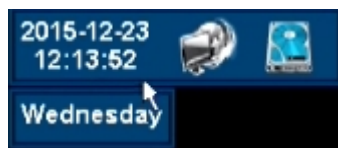
Move the mouse to the bottom of the screen, the main menu will pop-up.

System Setup, View Layout, Sequence, Zoom, Video Adjust, PTZ, Snapshot, Photos, Record setting, Playback, Quit (*left to right*)



### Status Menu

Move the mouse to the top of the screen, the status menu will pop-up, in which you can check time, network status, storage status and alarm status.



### Right-Click Menu

Right click on a channel, the menu will show.



## 3. Startup and Power off

### 3.1 Boot up

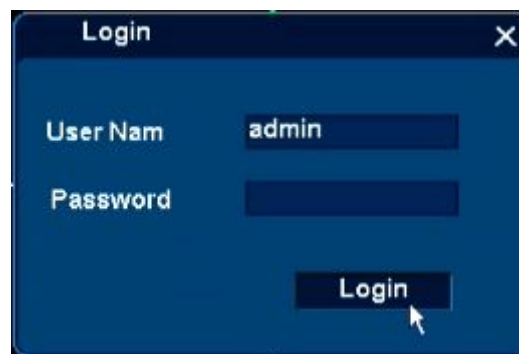
Make sure all the devices in the environment have been configured and connected properly, power-on the NVR, NVR system will search and connect network camera in the environment automatically. After searching and adding, system will display live-video of the cameras added.

**Notes:**

Only when the NVR boot up for first time, or there is no network camera added before, will the NVR search and add network camera automatically.

### 3.2 Login

After booting up and connecting the network cameras, the system is in multiple-channel display mode. You need to login for further operations. Click any item in menu, the Login dialog box appears.



System default account:

**User Name:** *admin*      **Password:** *123456*

**Notes:**

- Please modify password after you first login.
- Within 30 minutes, three times login failure will result in system alarm and mouse lock until login success.

### 3.3 Startup Wizard

**Notes:**

- Enable this wizard in **System Setup-General-General-Display Wizard for Startup**, this wizard will display when NVR startup. **Startup Wizard** and **Auto Search and Add** will not display at the same time.

Step 1.

You can get Iphone and Android APP downloading address, Device ID by scanning these QR Codes. You can click Nest to skip.



Step 2.

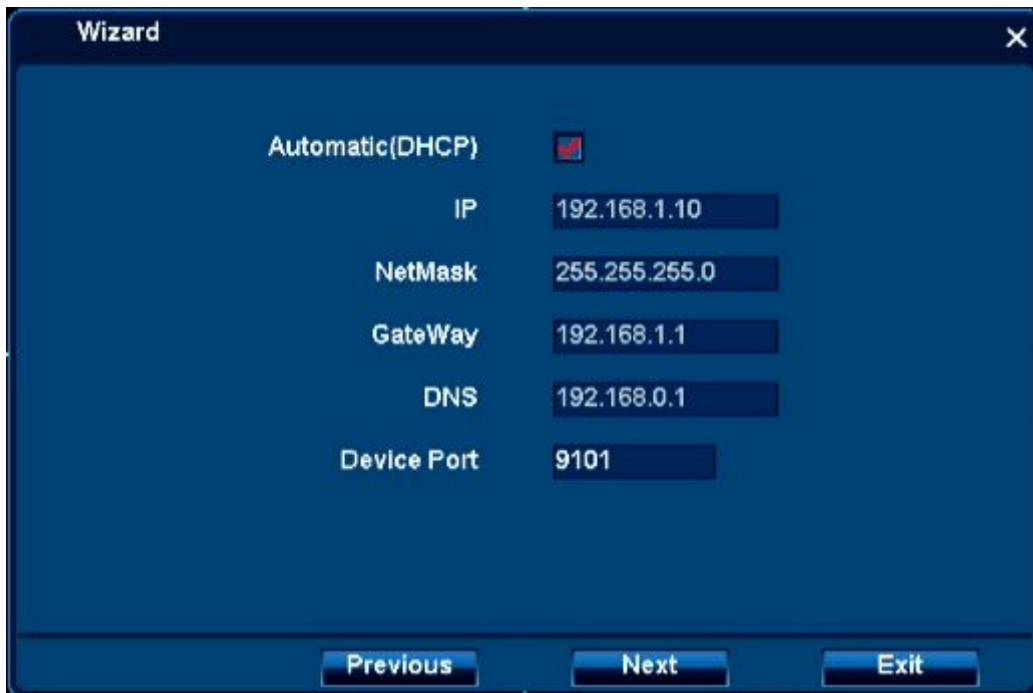
Remote controller device ID, Language, Date format, Date, Time, Time zone, Startup wizard, etc. can be set in second page.



Step 3.

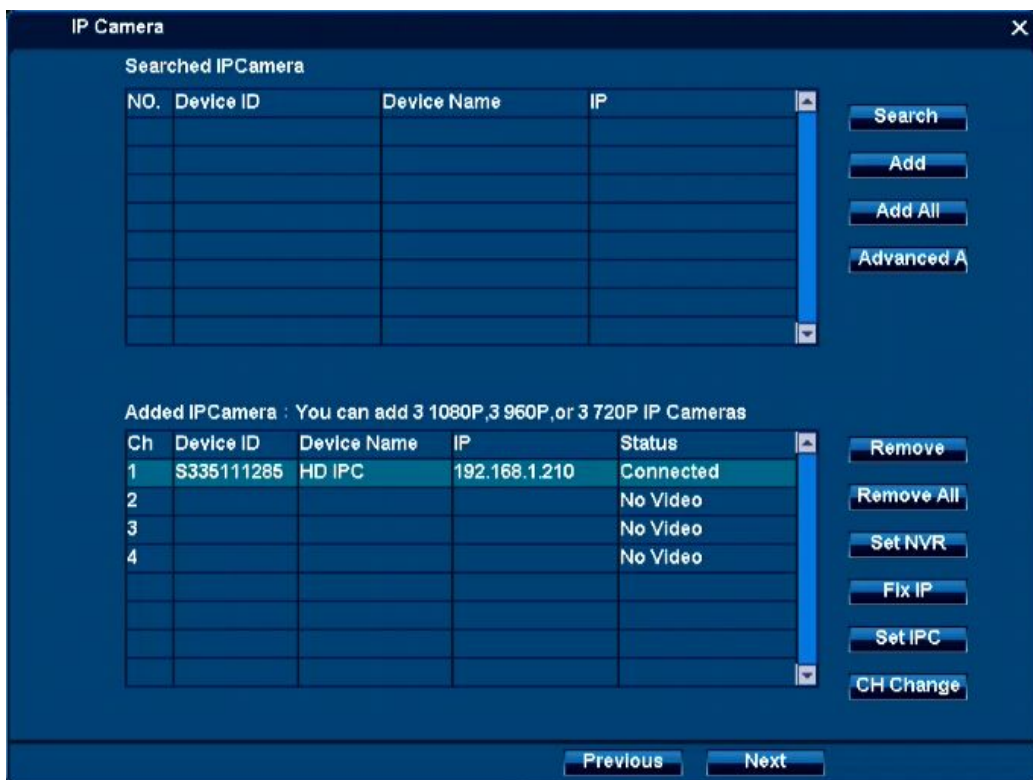
Network settings and device part.





Step 4.

You can search and add network camera, and manage added camera in page 4.



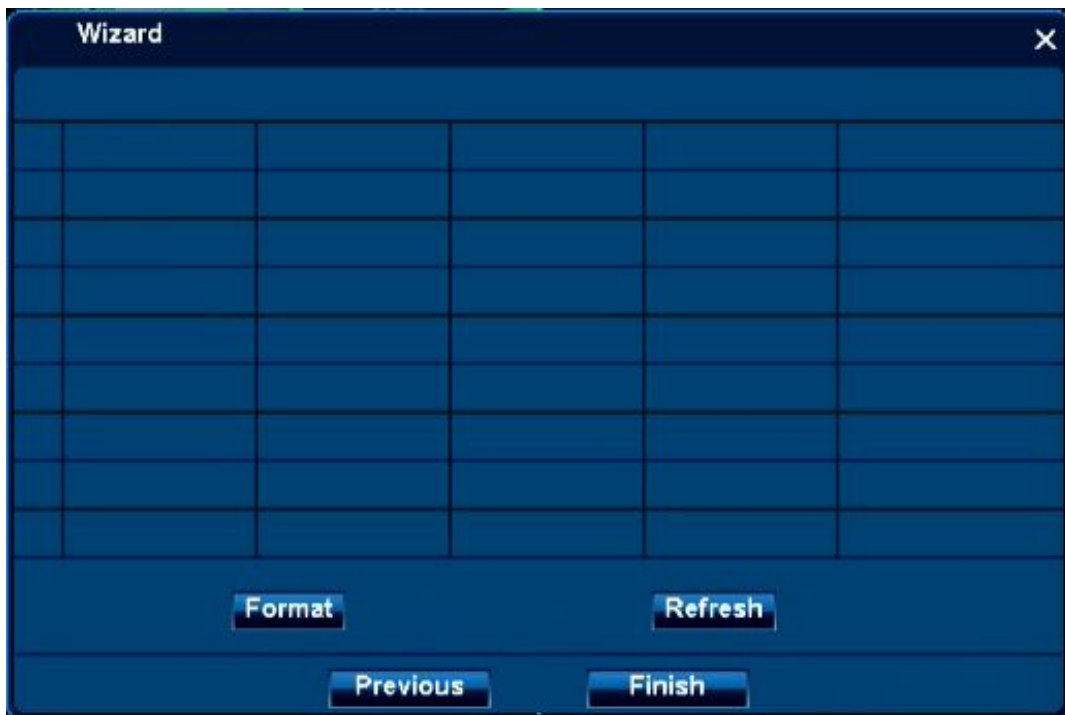
Step 5.

Stream resolution and rate can be set in page 5.



Step 6.

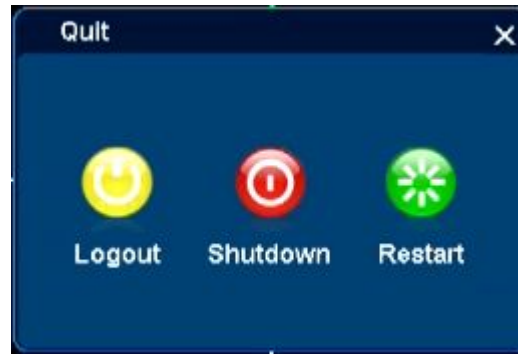
You can access storage information, or format storage devices.



### 3.4 Power off



Click Quit in main menu at the bottom of screen, and power menu appears. You can *Logout, shutdown, Reboot* the NVR system.



## 4.Simple GUI Operation

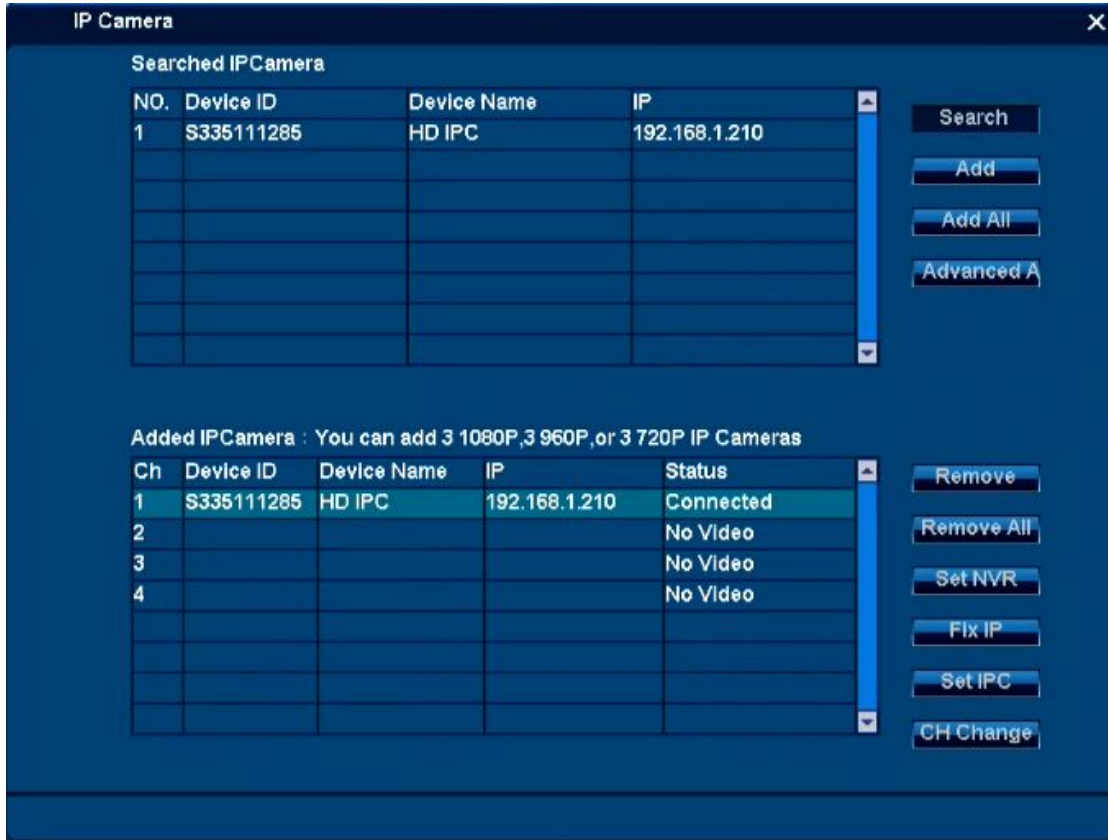
### 4.1Network Camera Management

All the network cameras in the LAN can be automatically detected and listed by NVR. Right click in the main view, select **IP Camera**, and IP camera management dialog box appears. Click **Search** to detect all the network cameras in the LAN, which will be listed after searching, as shown below.

Select one camera and click **Add**, the camera will be added. Click **Add All** to add all detected cameras, but the amount of added cameras cannot be more than the limit of NVR. Use **Advanced Add** to add ONVIF protocol network camera.

Select one added camera and click **Remove** to remove the camera, **Remove All** to delete all added devices.

Select one added camera and click **Set IPC** to input user name and password of the camera



## 4.2 Recording and Playback

### 4.2.1 Recording

After the system booted up, it is in default 24-hour regular recording mode. If necessary, you can set record type and time in **Record Setting** interface: **right-click menu- Record Setting**.



**Note:**

- You can set two recording periods for each channel.
- Copy function: This function allows you to apply the same settings of one channel to other channel(s). After setting in one channel, you can click copy button and then select the channel(s) you want to apply the same operation, the settings will apply to selected channel(s).

Please highlight icon to select the corresponding function. After completing all the setups please click OK button, system goes back to the previous menu.

## 4.2.2 Playback

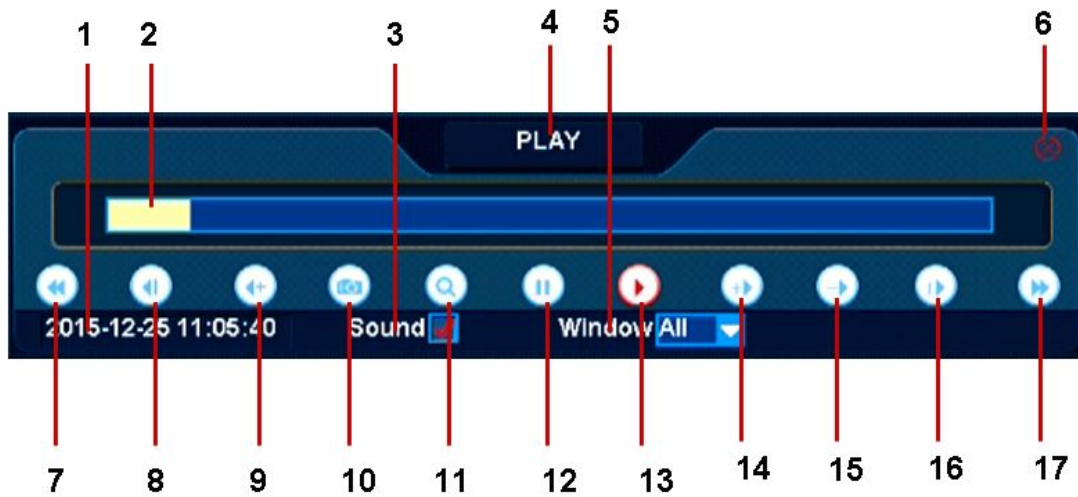
Click “ **right click menu/main menu → Playback** ” , then system will open video playback interface, shown as below:



Click check-box of the channel and time period needed, then click “ Play ” button, system will display video playback interface, shown as below,



Note: double click playback time area to open minutes view; double-click again to open hours view.

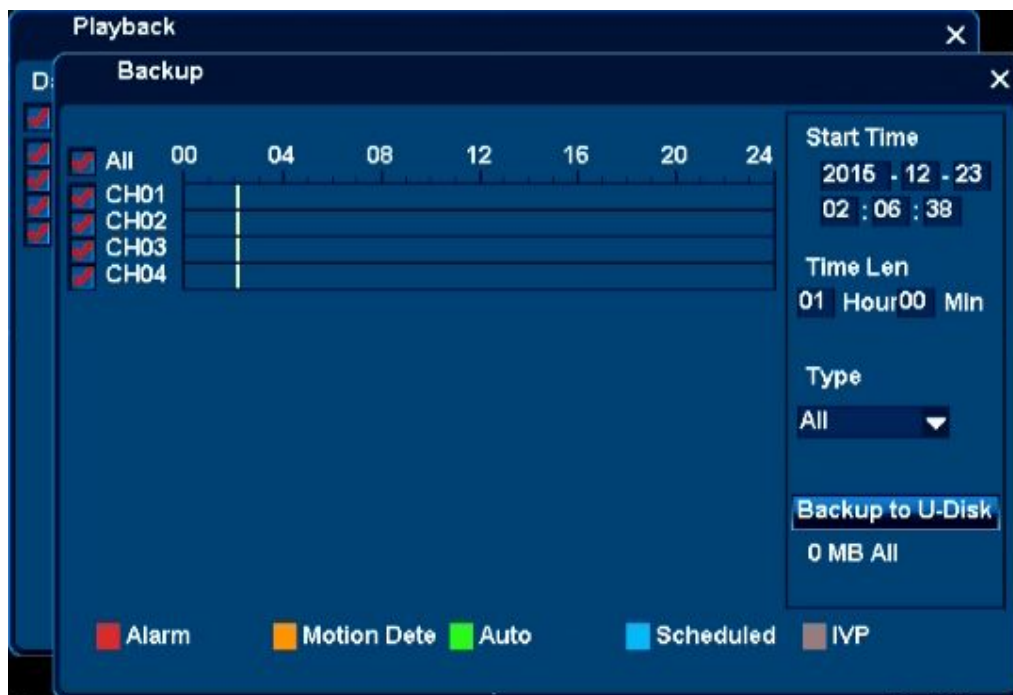


Right click the mouse to hide Video playback control interface, click the ESC button on the top-right corner to quit the video playback.

No.	Name	Remarks
1	Playback time	The current playback time
2	Progress bar	The progress of the current playback in this hour
3	Sound	Open/Close sound playback

4	Status	Video playback status display
5	Window	Choose the window needed
6	Quit	Video playback close control interface
7	Last hour	Select the window and playback the last hour video
8	Retreat	2 seconds retreat after window clicking
9	Fast retreat	Fast retreat play, click switch 8X/16X
10	Snapshot	Can capture any frames in video playback
11	Zoom in	To magnify playback pictures
12	Pause	To stop play
13	Play	Play video
14	Fast forward	Speed up, click switch 2X/4X/8X/16X
15	Replay in slow	Replay in slow, click switch 1/2X 1/4X 1/8X 1/16X
16	Single frame	1 frame forward at a time
17	Next hour	Select window and play next hour video content

Next you can backup the record file into U disk.



## 4.3 Network Setup

*System Setup- Network- Connection*, you can set network in this menu.



IP address: Here you can input IP address. Input the corresponding number to change the IP address and then set the subnet mask and default gateway.

DHCP: It is auto search IP function. When enable DHCP function, you cannot modify IP/Subnet mask/Gateway. These values are from DHCP function. If you have not enabled DHCP function, you need to input IP/Subnet mask/Gateway. You need to disable DHCP function to view current IP information.

DNS: DNS server IP address.

After completing all the setups please click OK button, system goes back to the previous menu.

## 4.4 PTZ

### Note:

- Slight difference may be found in the user's interface, due to various protocols.
- Please note the item is grey if current series product does not support this function.

Please select channel first, the select **PTZ** in main menu or right-click menu, the interface is shown as below.



Here you can set PTZ direction, speed, focus, zoom, iris, preset, patrol, trail and guard, scan, aux call, 485 PTZ and etc.



Please click direction arrows to adjust PTZ position. There are 4 direction arrows. Click + and - to adjust zoom, focus and iris.

## 4.5 Video Adjust

*Right click menu/main menu- Video Adjust*, video adjust interface appears, shown as below:



1. Select channel number needed to be adjusted first.
2. Click“-/+” to adjust “Lightness, Contrast, Chroma, Sharpness” to meet the requirements of clients.
3. By clicking drop-down list box of day & night, you can select IPC day/night switch mode.
4. Click drop-down list of “maximum/minimum” to set IPC exposure time. This function is mainly used when screen can’t show all the content, adjust exposure time to see the chars on the display.
5. When click” AUTO AWB, MIRROR, TURN, NOCOLOR, and ENABLE WDR” Check-box of IPC, the corresponding functions turn on. The WDR turns on only when the IPC support this function and restart.
6. Click ‘**save**’ button after video adjust operation finish.

## 4.6 Alarm Settings

### 4.6.1 Alarm E-mail

Right click *menu/main menu- System Setup- Alarm- E-Mail*, alarm e-mail settings dialog appears, shown as below:



Items	Description
<b>SMTP</b>	Choose or input the SMTP server of sending E-mail
<b>Port</b>	Input the port for SMTP
<b>SSL&amp;TLS</b>	Choose the security protocols for SMTP
<b>User Name</b>	Username of sender
<b>Password</b>	Password of sender
<b>Interval</b>	Set the interval of sending E-mails
<b>Receiver E-mail Add.</b>	E-mail(s) to receive alarm e-mail
<b>Modify</b>	Modify receiver E-mail address that has been added
<b>Add</b>	Add new E-mail to receive alarm e-mail
<b>Delete</b>	Remove a selected receiver E-mail
<b>Mail Testing</b>	Send test e-mail to check whether these settings work fine

## 4.6.2 Motion Detect

Right click *menu/main menu- System Setup- Alarm- MD*, Motion detect settings dialog appears, shown as below:

Highlight **Enable** check-box for the channel to enable full-screen motion detect.



If you want to detect a certain area, click **Set**, long press mouse and drag to select the area, you can choose 4 areas at most for one channel. Sensitivity can also be set here. Click OK to save the settings.



Next, you need to set alarm output, click **Set** alarm output of the channel, shown as below.



Items	Description
<b>Keep Alarm</b>	Set the time of keeping alarm
<b>Turn on the Buzzer</b>	If selected, the buzzer inside the NVR will buzz when alarming.
<b>Send to Client</b>	If selected, remote client will alarm when alarming.
<b>E-mail Alert</b>	If selected, NVR will send alarm E-mail when alarming.

<b>Snapshot</b>	If selected, NVR will send alarm E-mail with screenshot when alarming.
<b>Call Preset</b>	If selected, NVR will call preset point when alarming.
<b>Start to Record</b>	If selected, NVR will start to record when alarming.
<b>Output Module</b>	If selected, alarm device connect to NVR will work when alarming.
<b>CH</b>	Set the channel number of the alarm device connected.

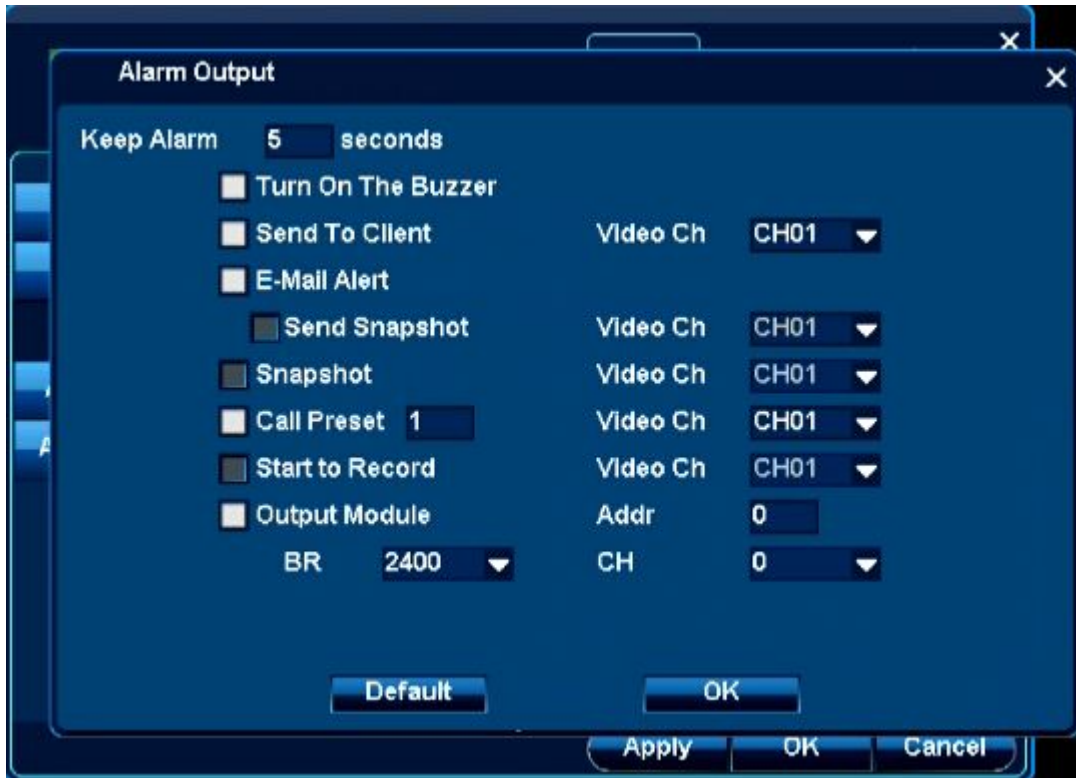
### 4.6.3 Video Lost Alarm

Right click *menu/main menu- System Setup- Alarm- No Video*, No video settings dialog appears, shown as below:

Highlight **Enable** check-box for the channel to enable alarm when video lost.



Next, you need to set alarm output, click **Set** alarm output of the channel, shown as below.

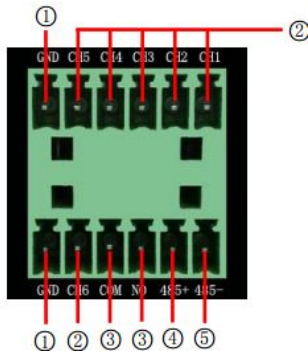


Items	Description
<b>Keep Alarm</b>	Set the time of keeping alarm
<b>Turn on the Buzzer</b>	If selected, the buzzer inside the NVR will buzz when alarming.
<b>Send to Client</b>	If selected, remote client will alarm when alarming.
<b>E-mail Alert</b>	If selected, NVR will send alarm E-mail when alarming.
<b>Snapshot</b>	If selected, NVR will send alarm E-mail with screenshot when alarming.
<b>Call Preset</b>	If selected, NVR will call preset point when alarming.
<b>Start to Record</b>	If selected, NVR will start to record when alarming.
<b>Output Module</b>	If selected, alarm device connect to NVR will work when alarming.
<b>CH</b>	Set the channel number of the alarm device connected.

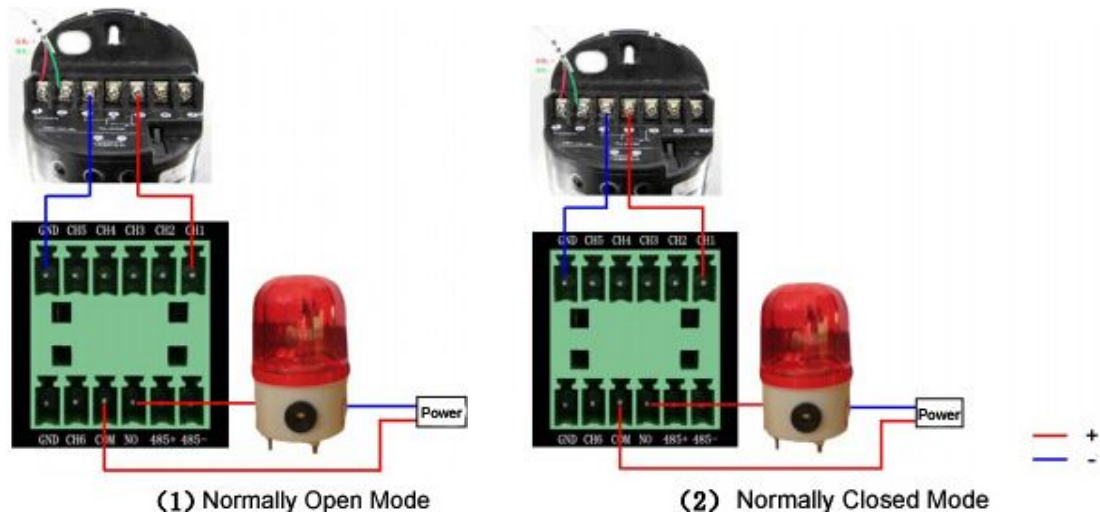
#### 4.6.4 Alarm/PTZ Device

Some models don't support alarm/PTZ device input/output

NO for Normally Open NC for Normally Closed



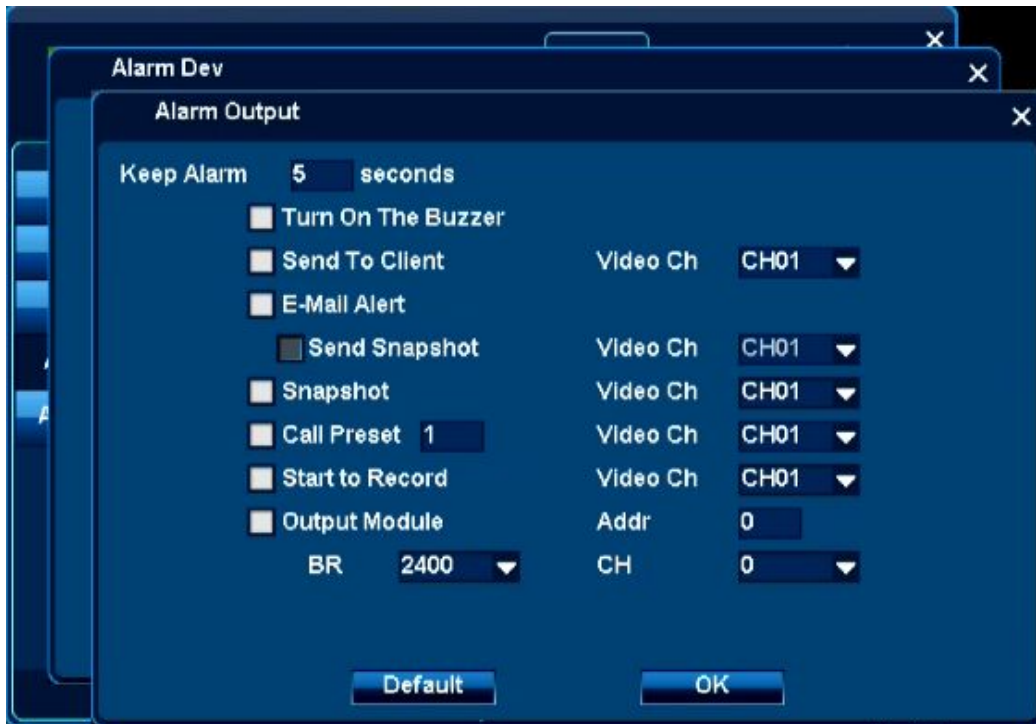
No.	Interface	Description
1	GND	Connect cathode of alarm-input device
2	CH1~CH6	Connect anode of alarm-input device
3	COM/NO	Connect alarm-output device (Regardless of polarity)
4	485+	Connect anode of PTZ device
5	485-	Connect cathode of PTZ device



Right click **menu/main menu- System Setup- Alarm- Alarm Device**, Alarm Device settings dialog appears, shown as below.



Next, you need to set alarm output, click **Set** alarm output of the channel, shown as below.



Items	Description
<b>Keep Alarm</b>	Set the time of keeping alarm
<b>Turn on the Buzzer</b>	If selected, the buzzer inside the NVR will buzz when alarming.
<b>Send to Client</b>	If selected, remote client will alarm when alarming.
<b>E-mail Alert</b>	If selected, NVR will send alarm E-mail when alarming.
<b>Snapshot</b>	If selected, NVR will send alarm E-mail with screenshot when alarming.



<b>Call Preset</b>	If selected, NVR will call preset point when alarming.
<b>Start to Record</b>	If selected, NVR will start to record when alarming.
<b>Output Module</b>	If selected, alarm device connect to NVR will work when alarming.
<b>CH</b>	Set the channel number of the alarm device connected.

#### 4.6.5 Alarm Task

Right click *menu/main menu- System Setup- Alarm- Alarm Task*, Alarm Task settings dialog appears, shown as below.

You can set what time to enable *MD/No Video/Alarm Dev* alarm here.



#### 4.7 Account Management

Right click *menu/main menu- System Setup- General- User*, account management settings dialog appears, shown as below.

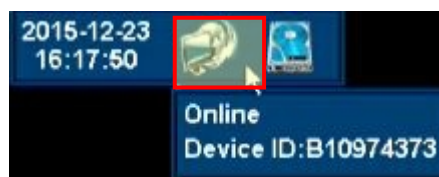


## 5. CloudSEE Remote Connection

### 5.1 Get CloudSEE ID.

Login NVR system, check the CloudSEE ID and whether the status is online, which means you can use CloudSEE network monitoring system to connect the NVR remotely. You can get CloudSEE ID with the following instructions.

- a. move the mouse to the top middle area of the system interface, the online status and CloudSEE will pop up,



- b. **Right-click menu/main menu - System Setup – Network- Connection**, you can find CloudSEE ID and status here.

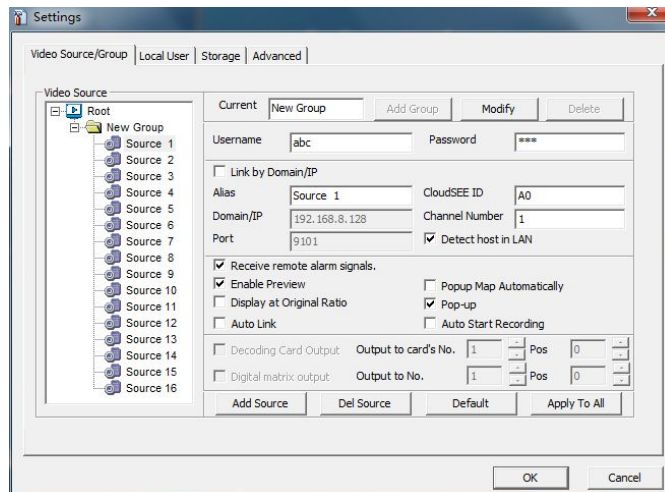


## 5.2 Connect NVR with CloudSEE

1. Install and run CloudSEE, the main view is as shown below.



Click "Settings" on the right function panel , the Settings dialog box appears, you can add new source or edit a source, and input Username, Password, CloudSEE ID, Channel Number, then click OK.




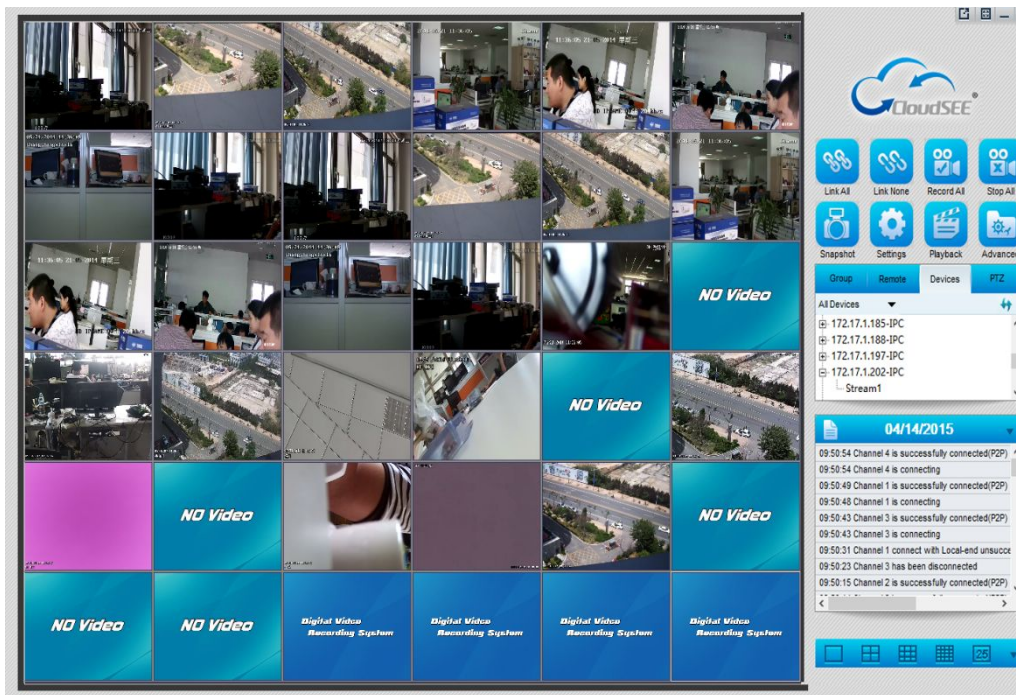
Click "Group", and select the device just added, right click and select Connect (or double click the source)



The live view of the camera added will display in the live view window.



If the NVR and PC in the same subnet, the NVR can be searched by clicking **Devices**-  to expand, and double click channel number, the channel will be added.



### 5.3 Connect NVR with Smart Phone



SKYP2P



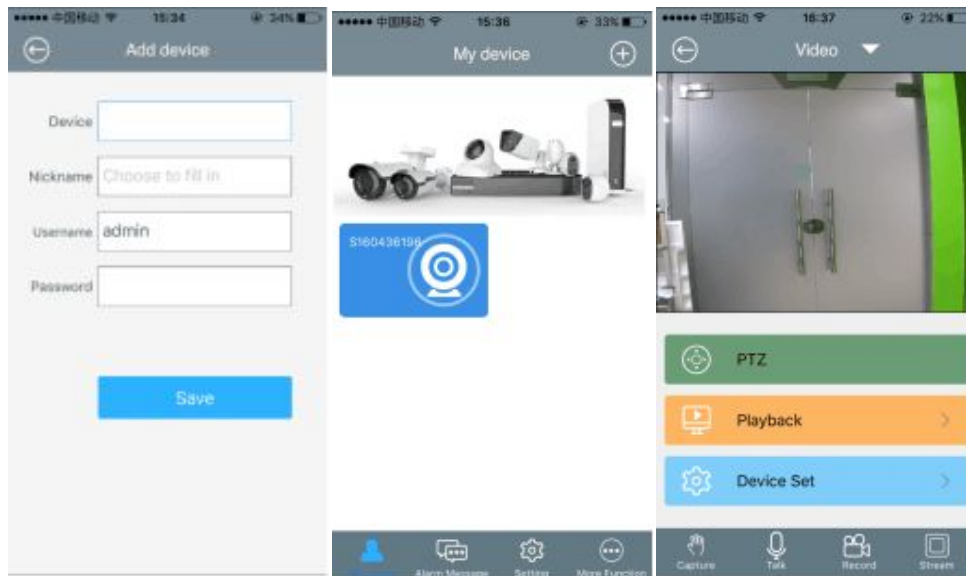
Android Device



IOS Device

Android users can scan QR code “ Android Device“ to get accurate link downloading android app called SKYP2P or search and install it from Android market or “Google Play”.

Iphone users can scan QR code “ IOS Device “ to get accurate link downloading android app called SKYP2P or search and install it from Iphone” APP Store”.



1. Open and run SKYP2P App, Tap +, and select add device.
2. Input Device ID, Username, Password of the device, tap Save
3. The device will be added. Tap the device on the list, live video will display.