

User Manual

# H.264 Digital Video Recorder

User Manual

# Contents

1.	Production Introduction.....	4
2.	Installation.....	4
2.1.	HDD Installation.....	4
3.	Fast Operation.....	5
3.1.	Login.....	5
3.2.	Starup Wizard .....	6
3.3.	Menu Operation.....	11
3.3.1.	View Layout.....	13
3.3.2.	Sequence Interval.....	13
3.3.3.	Video Adjust.....	14
3.3.4.	PTZ.....	15
3.3.5.	Clients.....	16
3.3.6.	Snapshot.....	17
3.3.7.	Photos.....	17
3.3.8.	Record Setting.....	19
3.3.9.	Playback.....	21
3.3.10.	Clear Alarm.....	24
3.3.11.	Shutdown.....	24
4	System Setup.....	25
4.1	General.....	26
4.1.1	Time.....	33

# User Manual

4.1.2	User.....	33
4.2	Channel.....	35
4.2.1	Preview setting.....	36
4.2.2	Stream setting.....	41
4.2.3	Audio setting.....	42
4.3	Network setting.....	46
4.4	Alarm .....	46
4.4.1	Mail Setting.....	46
4.4.2	Motion Detection.....	49
4.4.3	No Video.....	53
4.4.4	Alarm Device.....	56
4.4.5	Alarm Task.....	58
4.5	System.....	59
4.5.1	Log:.....	60
4.5.2	Maintenance.....	60
4.5.3	Information:.....	63
4.6	Device.....	64
4.6.1	Storage.....	64
5	CloudSEE Remote connection.....	66
5.1	Get CloudSEE ID.....	67
5.2	Connect DVR with CloudSEE.....	68
5.3	Connect DVR with Smart phone.....	72

## 1. Production Introduction

Network DVR is a monitoring product that allows audio and video synchronized. It adopts embedded and micro processor, so system runs more steadily. This product integrates functions such as video & audio, network transmission, alarming management, etc. Meanwhile, it has the features of DVR and DVS. It can not only work alone, but also can be networked to a powerful security monitoring network. It is widely used in school, factory, supermarket, bank, traffic, water conservancy facilities, residential area, and warehouse department, etc.

## 2.HDD Installation

1. Ensure Power supply has been disconnected, open the case cover;
2. Connect HDD data line, power line first , then fix the HDD in the case;
3. Install the cover, connect the power, which with adaptor, press the power switch;
4. Formatting the HDD (Please check details from : System Setup—Peripheral—Storage Device—Formatting );
5. Network DVR can normally make snapshot and video.

## 3.Fast Operation

### 3.1 Login

After starting system, You need to login for further operations. Click any item in menu, the Login dialog box appears.



#### Steps:

1. [User Name] input default user name 'admin';
2. [Password] is 123456, that is nothing input;
3. Single click [Login], then finish login operation.

Remarks: If login failure for 3 times, mouse will be locked for 10 seconds, DVR will alarm until login successfully .

## 3.2 Startup Wizard

**Notes:**

Enable this wizard in System Setup-General-General-Display Wizard for Startup, this wizard will display when DVR startup. Startup Wizard and Auto Search and Add will not display at the same time.

**Step 1.**

You can get Iphone and Android APP downloading address ,Device ID by scanning these QR Codes. You can click Nest to skip.



Step 2.

Remote controller device ID, Language, Date format, Date, Time, Time zone, Startup wizard, etc. can be set in second page.



Step 3.

User Group,user list and password.

Wizard

User Group Local User

User Name admin

User List admin

Original Password

New Password

Confirm Password

Modify

Previous Next Exit

Step 4.  
Network settings and device port.





The image shows a 'Wizard' configuration window with a dark blue background. At the top, the title bar reads 'Wizard' with a close button (X) on the right. The main area contains several configuration options:

- Automatic(DHCP)**: A checkbox that is currently unchecked.
- IP**: A text field containing the value '192.168.1.11'.
- NetMask**: A text field containing the value '255.255.255.0'.
- GateWay**: A text field containing the value '192.168.1.1'.
- DNS**: A text field containing the value '192.168.1.1'.
- Device Port**: A text field containing the value '9101'.

At the bottom of the window, there are three buttons: 'Previous', 'Next', and 'Exit'.

Step 5.

Stream resolution and rate can be set in page 5.



Step6.

You can access storage information, or format storage devices.

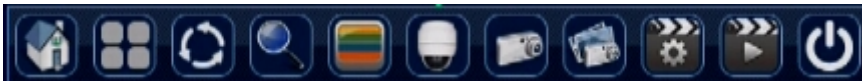


### 3.3 Menu operation

Main Menu

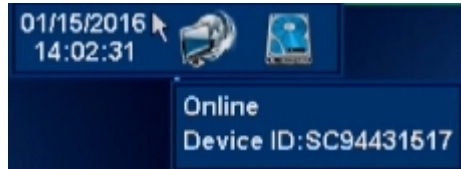
Move the mouse to the bottom of the screen, the main menu will pop-up.

System Setup, View Layout, Sequence, Zoom, Video Adjust, PTZ, Snapshot, Photos, Record setting, Playback, Quit (*left to right*)



### Status Menu

Move the mouse to the top of the screen, the status menu will pop-up, in which you can check time, network status, storage status and alarm status.



### Right-Click Menu

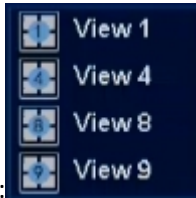
Right click on a channel, the menu will show as follows:



**Right Click Menu:** System Setup, View Layout , Video Adjust, PTZ, Clients, Snapshot, Photos, Record Setting, Playback, Clear Alarm

### 3.3.1 View Layout

Function Location: Right Click Menu:  View Layout



Main menu:


**Function** :while previewing, it can adjust screen distribution mode, can choose View1, View2 (Picture in Picture), View4, etc.

### 3.3.2 Sequence Interval

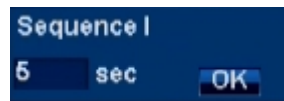
Function Location: Main Menu: 

**Function**: can show the previewing screen in turns, after finishing Sequence Interval, the screen layout will be the same with that before this function.

Steps:

1. Single click  at main menu to start Sequence Interval function ;
2. Setup how time interval ;

3. Single click [OK], then start 'Sequence Interval'



### 3.3.3 Video Adjust

**Function Location:** Right Click Menu:  Video Adjust

**Function Summary:** can setup different video effects during different time range.



**Steps:**

1. From Right Click Menu or Main Menu, Single click video Adjust Icon;
2. Select channel need adjusting ;
3. Manually Adjust [Lightness,Contrast, Chroma, Sharpness] ;
4. Single Click [Save] to take effect.

### 3.3.4 PTZ

**Function Location:** Right Click Menu: 

Please select channel first, the select PTZ in main menu or right-click menu, the interface is shown as below. Here you can set PTZ direction, speed, focus, zoom, iris, preset, patrol and etc.



Please click direction arrows to adjust PTZ position. There are 4 direction arrows. Click + and - to adjust zoom, focus and iris.

### 3.3.5 Clients

**Function Location:** Right Click Menu:



**Function:**

1. Count client-end numbers that connecting with the DVR;
2. Disconnect any connection, or disconnect all connections.



All client-end connection information: channel, IP, Port, and Connections all information can check here.



**Disconnect Steps:**

1. From the list, select any channel to connect;
2. Single click [Disconnect] , can disconnect the remote connection;
3. Single click [Disconnect All], can disconnect all remote connection.

### 3.3.6 Snapshot

**Function Location:** Right Click Menu:  Snapshot

**Function:** can make snapshot of object image and store into the HDD.

**Steps:**

1. Right click Right Click Menu or Main Menu [Snapshot];  
*Remarks: enter snapshot condition; the mouse icon will change into camera icon.*
2. Move into snapshot screen, single left click can get the snapshot, check the picture for prompt;
3. Right click can cancel snapshot condition.

### 3.3.7 Photos

**Function Location:** Right Click Menu:  Photos

**Function:**

1. Can query the photos stored in the DVR, include All picture,Manual picture,Alarm picture,Record picture.
2. Can copy the pictures into USB disk.



### 3.3.7.1 Snapshot Query

Steps:

1. [Search Type] choose snapshot type, default is All Picture;
2. [Channel] choose the channel for snapshot, default is All channels;
3. [Start] ~[End] is snapshot time range (Longest is 1 month), default is 'today' ;
4. [Search] button, single click, then the right list can show the eligible snapshot.

Remarks: single click can show the snapshot contents.

### 3.3.7.2 Picture Backup

#### Steps:

1. Connect U disk into the DVR USB port;
2. Single click to choose a picture and it can only choose one;
3. Single click [Backup to USB], after the prompt shown backup successfully can take away the U disk.

### 3.3.8 Record Setting

**Function Location:** Right Click Menu:



**Function :**It is in default 24-hour regular recording mode. If necessary, you can set record type and time,It can set two recording periods for each channel.  
**Copy function:** This function allows you to apply the same settings of one channel to other channel(s). After setting in one channel, you can click copy button and then select the channel(s) you want to apply the same operation, the settings will apply to selected channel(s).



Please highlight icon to select the corresponding function. After completing all the setups please click OK button, system goes back to the previous menu.

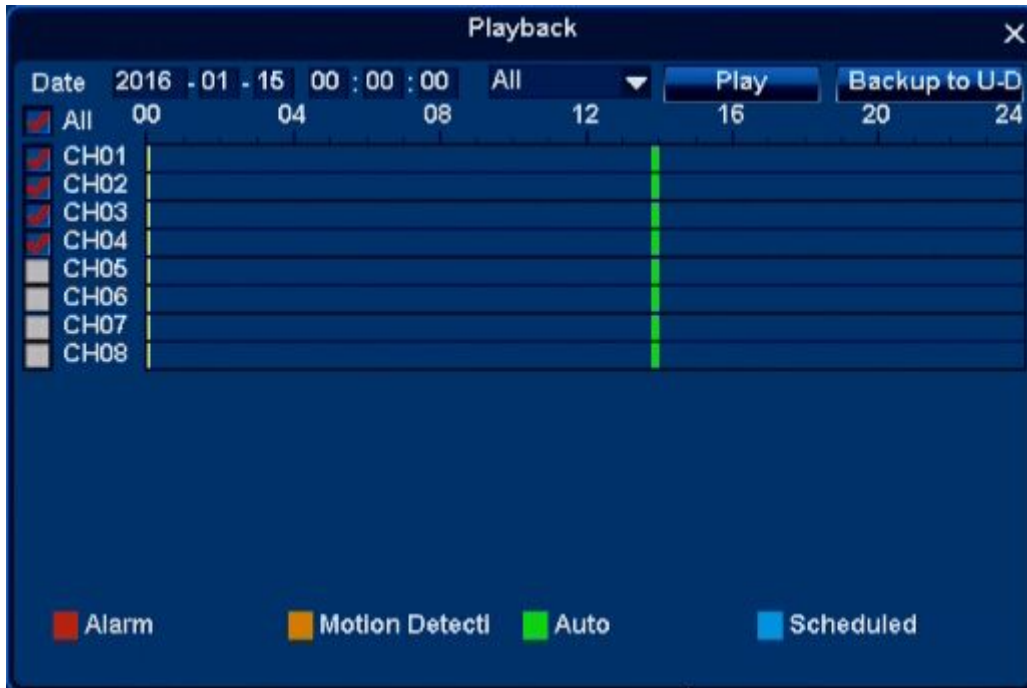
### 3.3.9 Playback

Function Location: Right Click Menu:  Playback

**Function:**

1. It can query, playback record file of any channel;
2. It can backup file into U disk.

**3.3.9.1 Playback setting**



**Steps:**

1. Right Click Menu or Main Menu[Playback] ;
2. Modify playback starting date and time

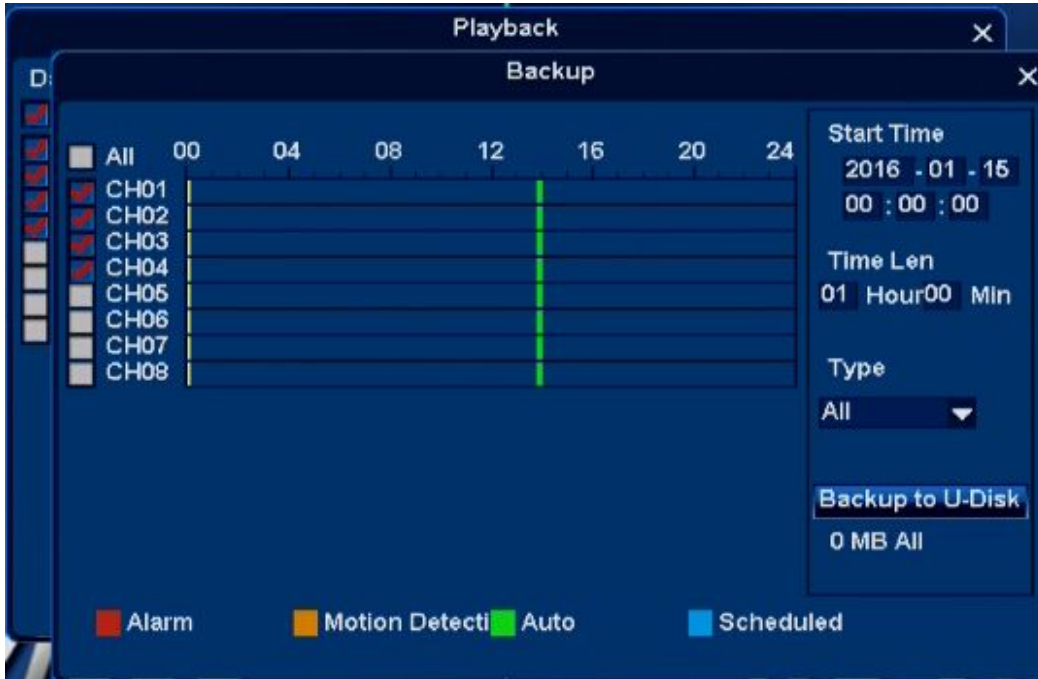
Remark: Also can click to choose playback position, double click open minute view as follows, double click again back to hour view.

3. Choose video type: Alarm/Motion Detection/Auto/Scheduled;
4. Choose playback channel , can multi-select or all select;
5. Single click [Play] button, can display the video.



### 3.3.9.2 Back up

It can backup the record file into U disk.



#### Operation Steps:

1. Single click [Backup] , open the backup interface;
2. Modify the backup start time;
3. Modify the backup time range;

4. Choose Record Type, Scheduled/ Manual/Alarm/ Motion detection record;
5. Choose backup channel;
6. Single click [Backup] to backup the file selected into U disk;
7. Install the display plug-in, then can use Media Player to display the backup file.

### 3.3.10 Clear Alarm

**Function Location:** Right Click Menu: 

**Function:**can clear some channel or all channel Alarm effect.

**Operation Steps:**

1. Right click alarming channel, choose [Clear Alarm/ Current] can clear alarming of current channel;
2. Right click all channels, choose [Clear Alarm/ Clear All] can clear alarming of all channels.

### 3.3.11Shutdown

**Function Location:** Main Menu: 

Click it, It will display like this:

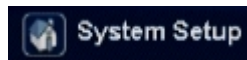




**Function:**can Logout, Shutdown and Restart.

## 4.System Setup

**Function Location:** Right Click Menu:



### 4.1 General

**Functions:**

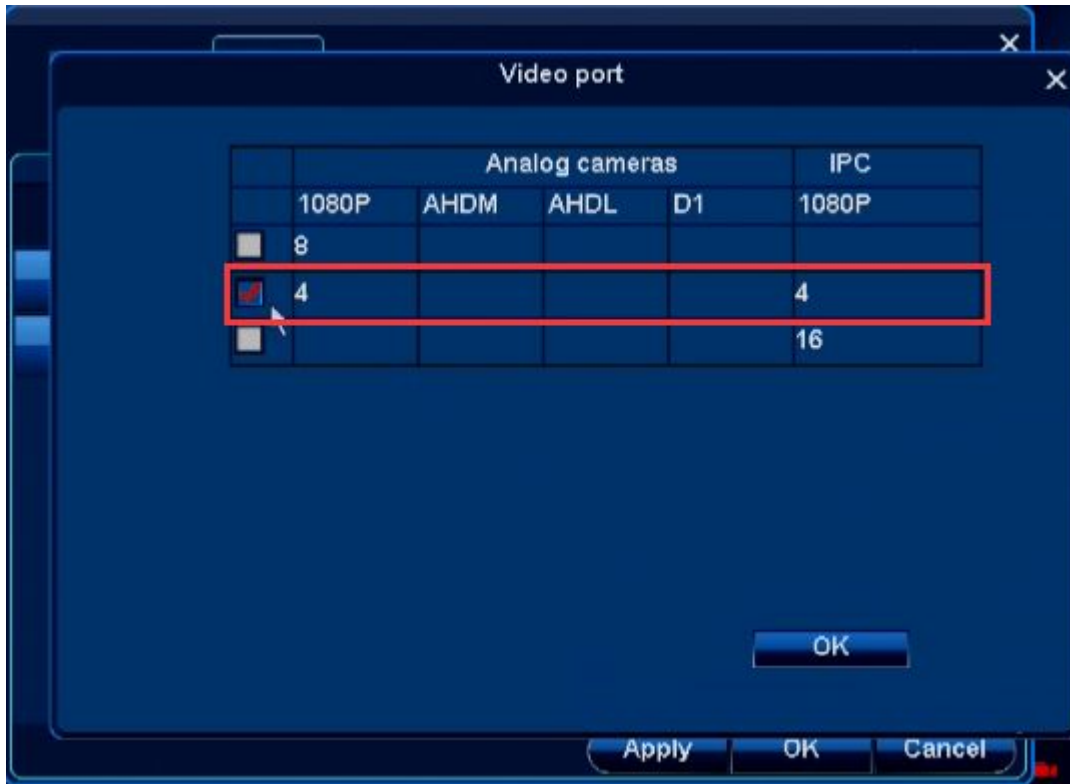
**General:** for example: Language, NTSC/PAL, Transparency, VGA Resolution, Display Device ID, Wizard, work mode etc.;

**Time:** for example date format, Set Date/Set Time, Auto Synchronize Time, Time zone setting;

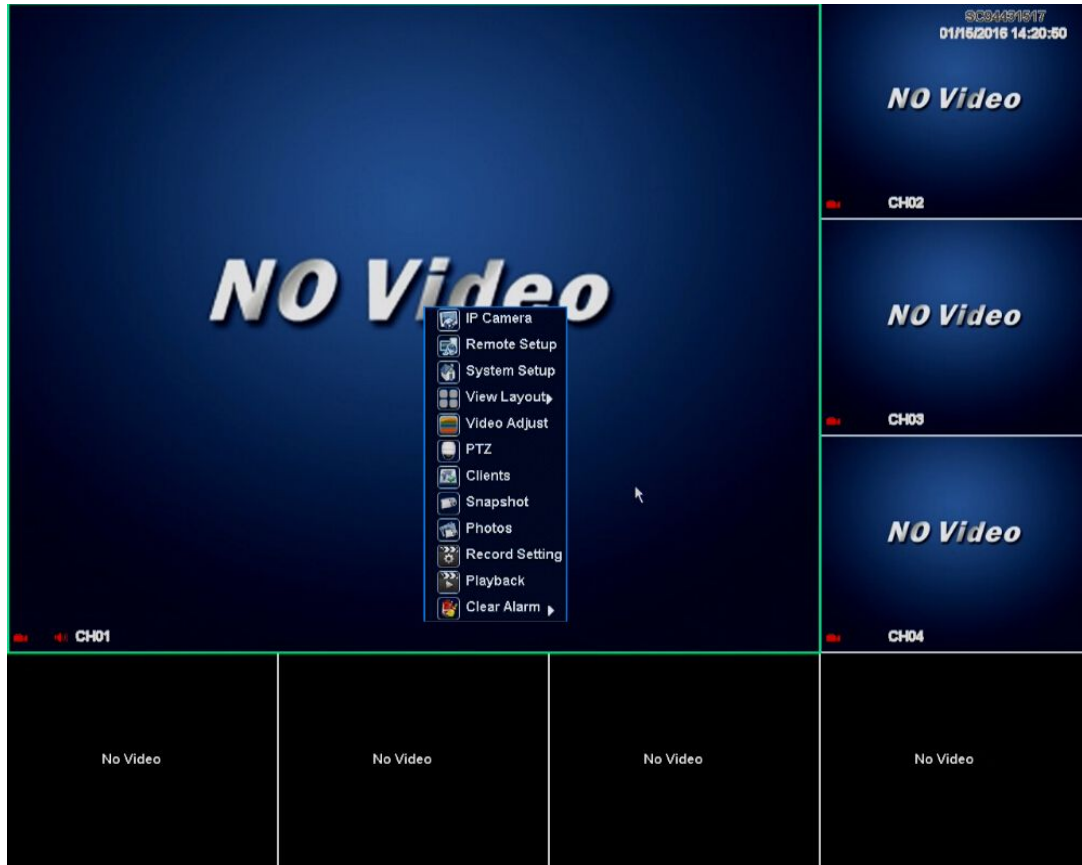
**User:** Local User, Network User Add/Delete/ Edit

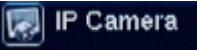


**Note ! Work Mode:here video port configuration can set to DVR mode/Hybrid mode/NVR mode.**



**Hybrid mode:** change video port to AHD+IPC mix,click ok,after dvr restart,interface will change to as below:



Select "IP camera"  on right click menu, you can search and add network camera here, and managed added camera.

IP Camera

Searched IP Camera

NO.	Device ID	Device Name	IP

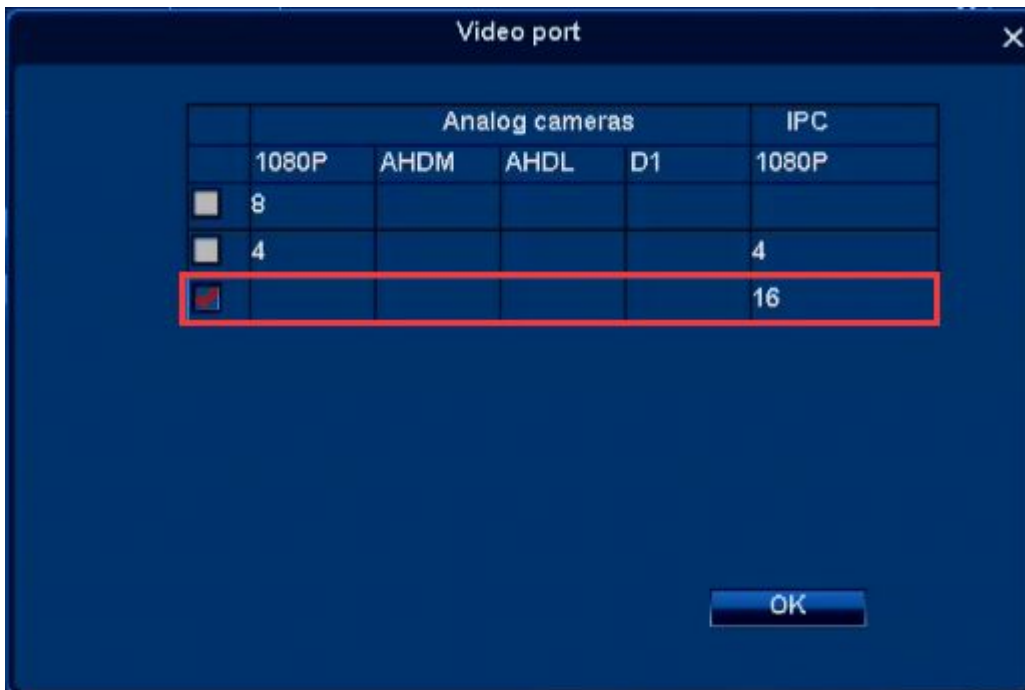
Search  
Add  
Add All

Added IP Camera : You can add 4 1080P,4 960P,or 4 720P IP Cameras

Ch	Device ID	Device Name	IP	Status
1	A1	CH01		Connected
2	A2	CH02		Connected
3	A3	CH03		Connected
4	A4	CH04		Connected
5				No Video
6				No Video
7				No Video
8				No Video

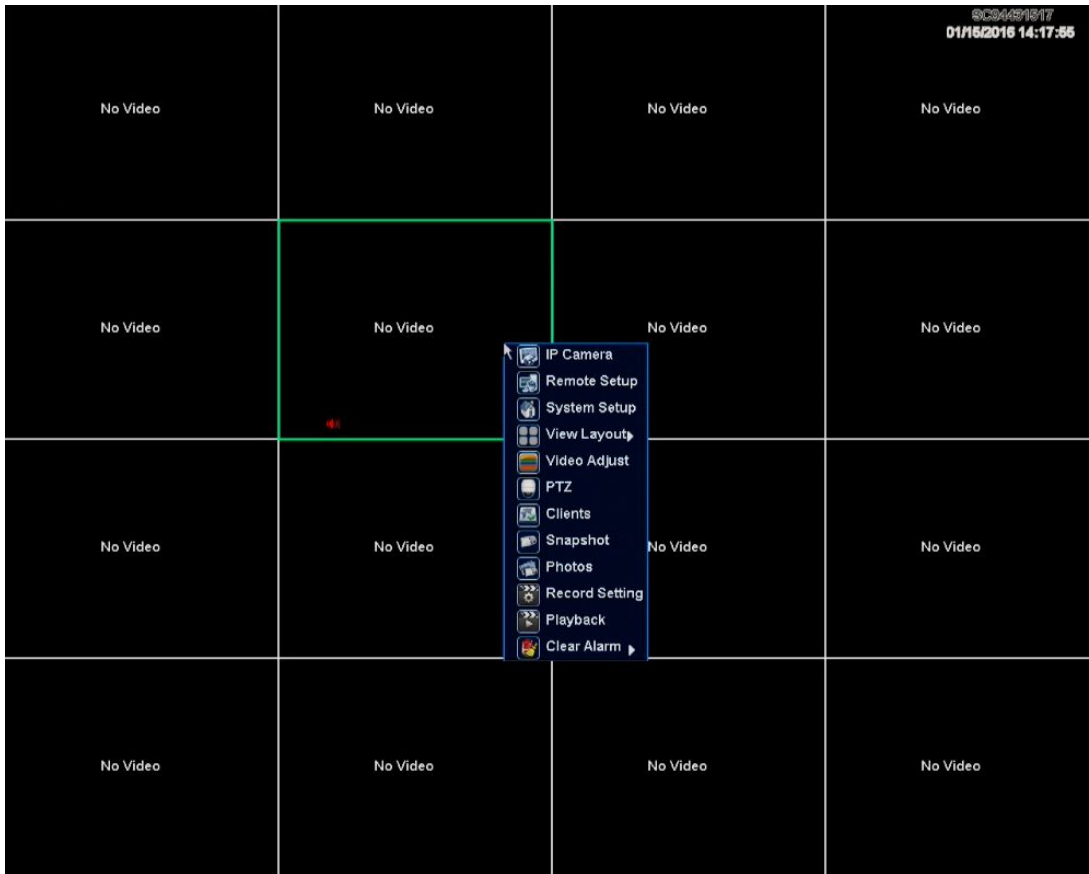
Remove  
Remove All  
Set NVR  
Fix IP  
Set IPC


**NVR mode:**change video port to IPC as below.



click ok,after dvr restart,interface will change NVR mode as below,it can connect 1080P/960P/720P IP cameras.

# User Manual



Select "IP camera"  on right click menu, you can search and add network camera here, and managed added camera.

**IP Camera**

Searched IP Camera

NO.	Device ID	Device Name	IP

Buttons: Search, Add, Add All

Added IP Camera : You can add 16 1080P, 16 960P, or 16 720P IP Came

Ch	Device ID	Device Name	IP	Status
1				No Video
2				No Video
3				No Video
4				No Video
5				No Video
6				No Video
7				No Video
8				No Video

Buttons: Remove, Remove All, Set NVR, Fix IP, Set IPC, CH Sort



### 4.1.1 Time



**Function Summary:** Setup system time, for example Set date, Set Time, Timezone Setting, Auto Synchronize Time, etc.

### 4.1.2 User



**Function Summary:**

1. It allows local users login the DVR and make allowed operation;
2. It allows add/edit/delete local users.

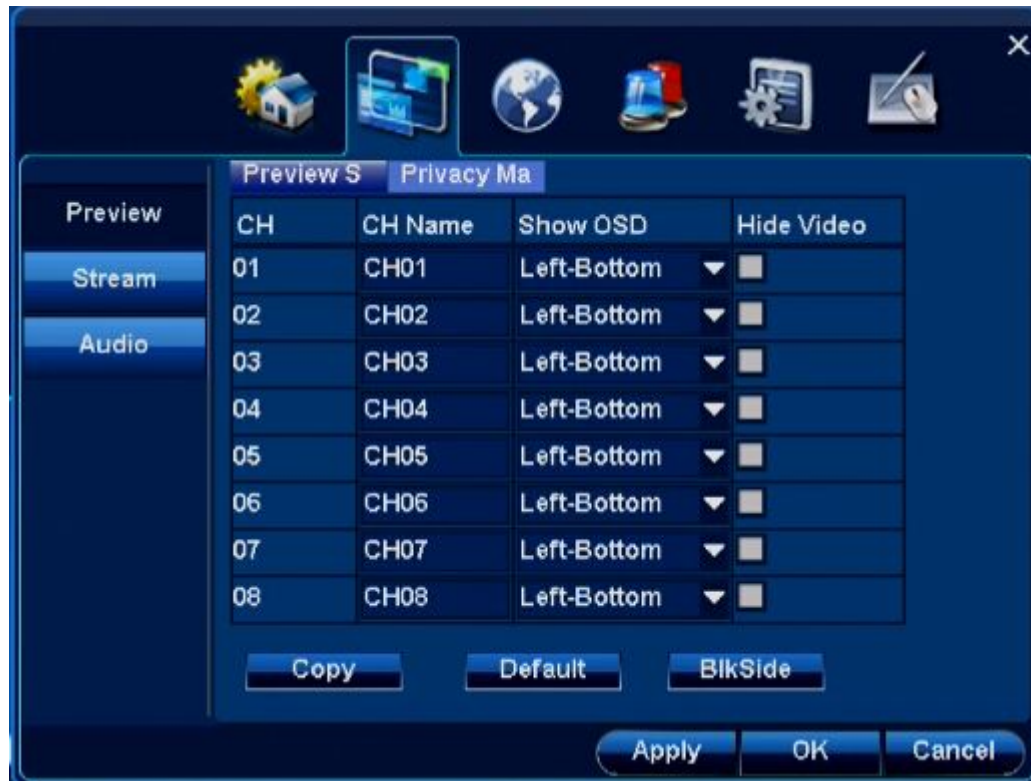
## 4.2 Channel

### Function:

**Preview setting:** Channel name, OSD position, Hide video;

**stream setting:** Main code stream image size and code rate; minor code stream image size, kbps, fluency

**Audio setting:** Audio compression, Audio monitoring

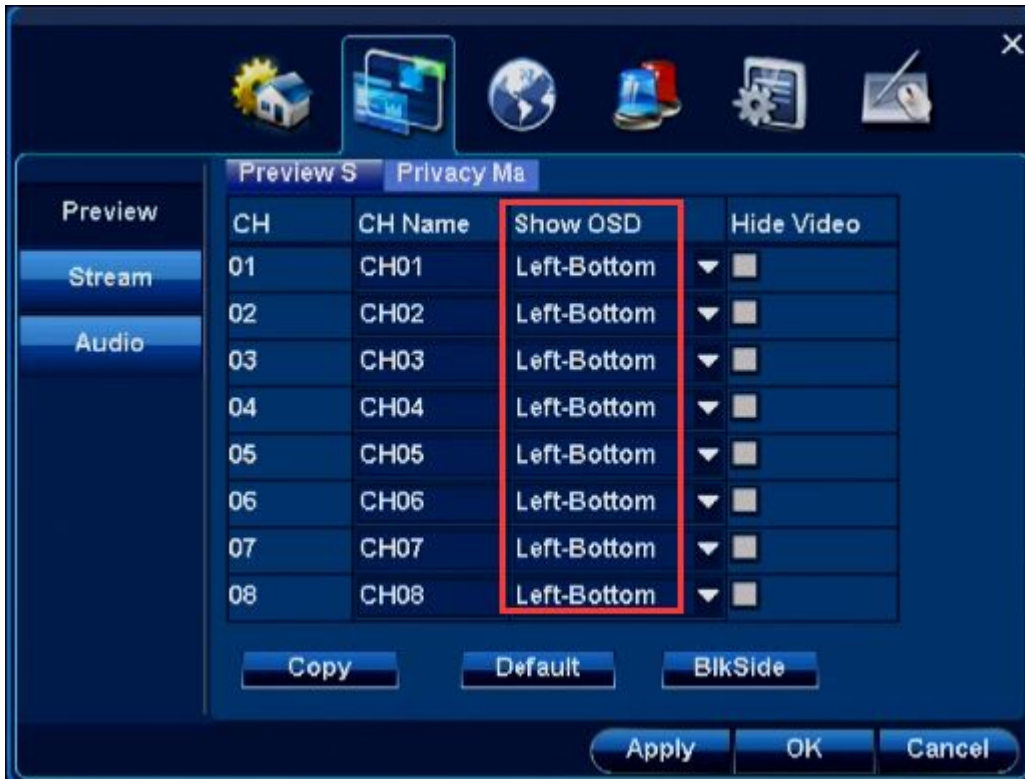


### 4.2.1 Preview setting

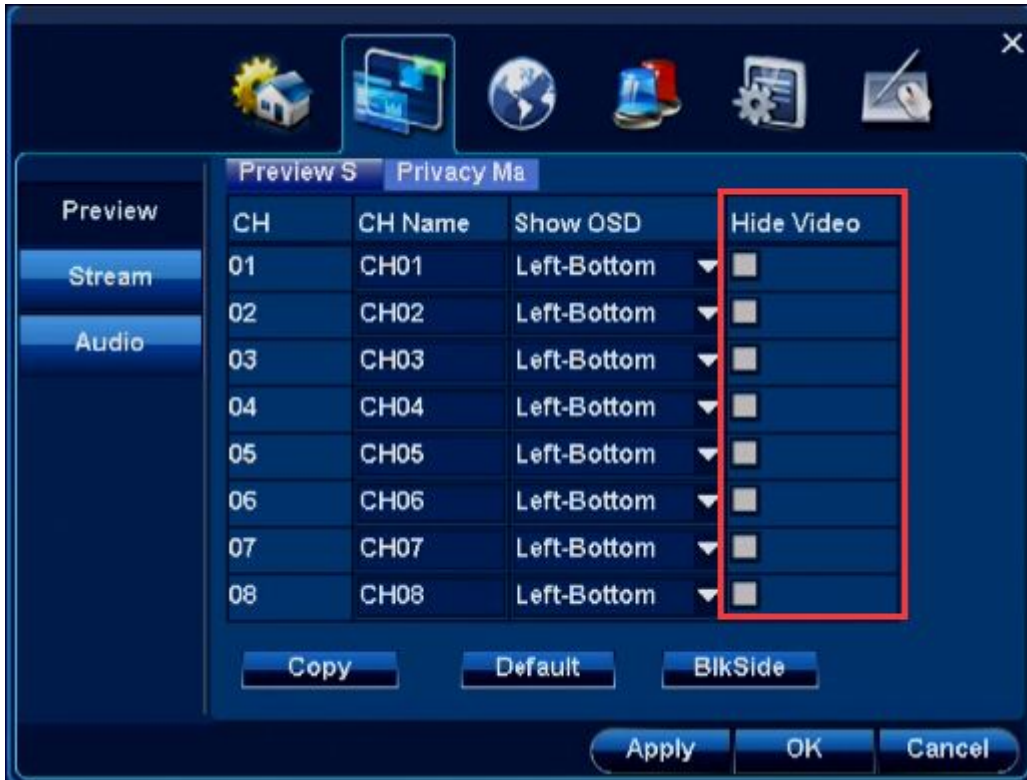
4.2.1.1 .Modify channel name



4.2.1.2 Modify OSD position



## 4.2.1.3 Hide Video

**Steps:**

1. Left click the box after "Hide Video"

Click **【Apply】** or **【ok】**, then preview the selected channel, that has been hidid.

#### 4.2.1.4 Privacy mask

Function introduction: Hide the part of channel, max 4 privacy mark.

**Step 1: Enable privacy mask, and start this function**



**Step 2: Setting part of privacy mask**



**Step 3: Ok; Apply**

1. Click **ok** , then **Apply** or **ok** 。





#### 4.2.2 Stream setting

- Function introduction:
1. Record stream setting—stream for local record;
  2. Network stream setting—stream for network transmission



### 4.2.3 Audio setting

Function introduction:1.Audio recording,Audio monitoring,Audio Type



#### 4.2.3.1 Audio Recording

Function introduction: 1. Choose "Audio recording", will record both sound and video 2. Choose "Audio monitoring" Network monitoring and remote record will be audio and video

**Steps:**

1. Choose "Audio recording", "open";  
Note: **【Copy】**, other channels can have same setting
2. Click **【Apply】** or **【ok】**
3. local record, network monitoring and remote record will be audio and video

#### 4.2.3.2 Audio monitoring

Function introduction: 1. Choose "Audio monitoring", support local audio; 2. Audio volume can be adjusted



#### Steps:

1. Choose "Audio monitoring", "open";

Note: **【Copy】**, other channels can have same setting

2. Click **【Apply】** or **【ok】** ,connect audio out, can hear sound 3. Audio volume can be adjusted。

### 4.3 Network



**IP address:** Here you can input IP address. Input the corresponding number to change the IP address and then set the subnet mask and default gateway.

**DHCP:** It is auto search IP function. When enable DHCP function, you cannot modify IP/Subnet mask/Gateway. These values are from DHCP function. If you have not enabled DHCP function, you need to input IP/Subnet mask/Gateway. You need to disable DHCP function to view current IP information.

**DNS:** DNS server IP address.

After completing all the setups please click OK button, system goes back to the previous menu.

## **4.4 Alarm**

Function :

- 1.Set E-mail alert
- 2.Open motion detection alarm, and set alarm out
- 3.Open No video alarm,and set alarm out
- 4.Open Alarm Device,and set alarm out
- 5.Set Alarm task

### **4.4.1 Mail Setting**

Function introduction: setting email alert parameters: sender setting, receiver setting, Interval etc



**Step 1: Sender setting**

1. Choose "SMTP";  
*Note: can manual writing or choose exist email server*
2. Write user name and password
3. Modify "Interval" (1~99Min) ;
4. Click **【Apply】** ,save setting



**Step 2: Receiver setting**

1. Write email address in “Receiver Site”
2. Click **【Add】** , then can add new receiver into list
3. Click **【Apply】** or **【ok】** ,save setting

**Step 3: Mail Testing**

1. Click **【Mail Testing】** ;
2. Detect the emails in collection box

**4.4.2 Motion detection**

Function introduction: When there is a move object, it can alarm and send alarm-out

**Step 1: Choose channel, open motion detection**

1. Choose "Enable";

Note: **【Copy】**, other channels can have same setting

2. Click **【setting】**



**Step 2: Set motion detection part**

1. Left click image as starting
2. Left click and move mouse at the same time to choose motion detection part
3. Release left click to finish setting

Note: It only can make motion detection in selected part.

4. Repeat 1—3,and the Max motion detection parts are 4
5. Click **【ok】** ,save setting

**Step 3: Adjust sensibility of motion detection**

1. Left click can adjust “Sensibility”

Note: The more number, the more sensible, the much easier to detect the move object

**Step 4: Choose Alarm out**

1. Click Alarm output **【setting】**
2. Setting parameters:
3. Click **【ok】** ,save setting



#### 4.4.3 No Video

Function introduction: When detect no video, it will send alarm alert



**Step 1: Choose channel, and open no video detection**

1. Choose "Enable";

Note: **【Copy】**, other channels can have same setting

2. Click **【set】**

**Step 2: Setting parameter**

**Step 3: Detect Alarm setting**

1. Disconnected with the selected channel
2. Selected alarm out parameter setting work normally
3. Top menu will popup alarm coin, and record log at same time



#### 4.4.4 Alarm Device

Function introduction: When touch alarm device, it will send alarm out.



**Step 1: Choose Alarm output**

Note: 【Copy】 ,other channels can have same setting

1.Click alarm output 【set】



**Step 2: Setting parameter**



Click **ok** ,save setting

**Step 3: Detect Alarm device**

1. Touch alarm device
2. Selected alarm out parameter setting work normally
3. Top menu will popup alarm coin, and record log at same time

#### 4.4.5 Alarm task

Function introduction: It only send alarm output in preset time

**Steps:**

1. Choose "Alarm types": "Motion detect/no video/Alarm Device "are available
2. Choose "Enable"



3. Modify "Start time", "End time";

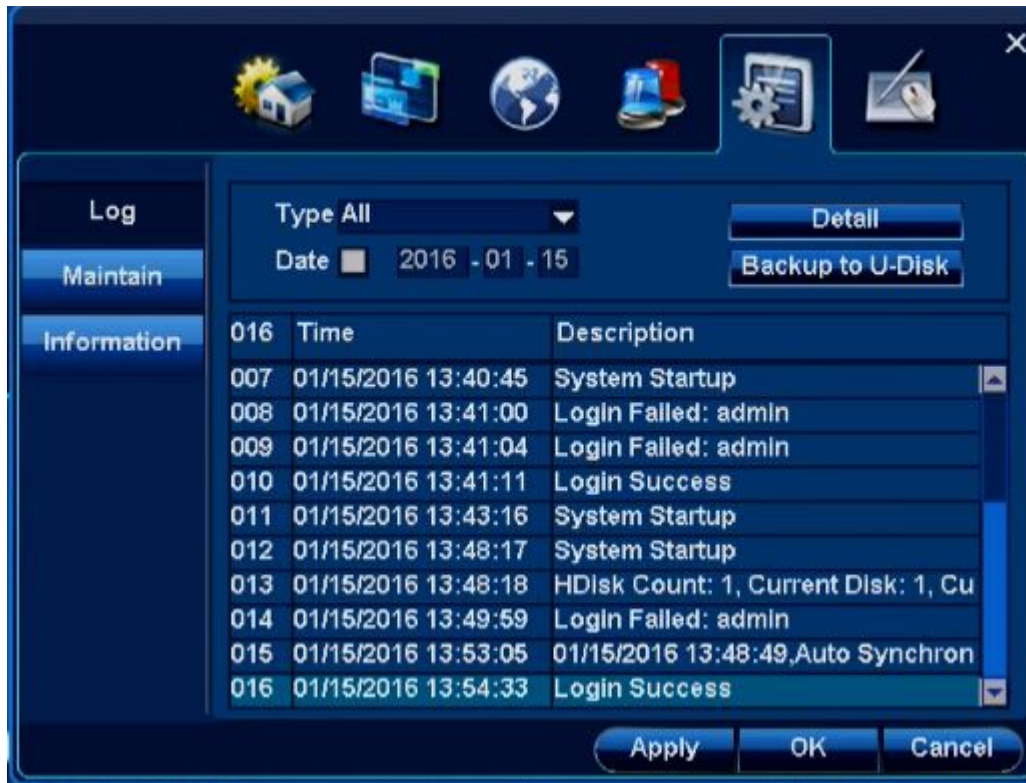
Note: It only send alarm output in preset time.

4. Click **【Apply】** or **【ok】** ,save setting

## 4.5 System

### 4.5.1 Log

Function 1. Search DVR operation log 2. Save the eligible logs into U disk



#### 4.5.1.1 Log query

Step: Query this DVR's log

1. Select log type, eg system operation, login, etc.
2. Change query time  
**Note:** Don't select above "Time", it will query all logs.
3. Click and select log, Single-click" Detail" to read more information.

#### 4.5.1.2 Log backup

Step: Backup log into U-disk.

1. Insert FAT32 format U-Disk
2. Query qualified log.
3. Click "Backup" button to backup the log into U-Disk.

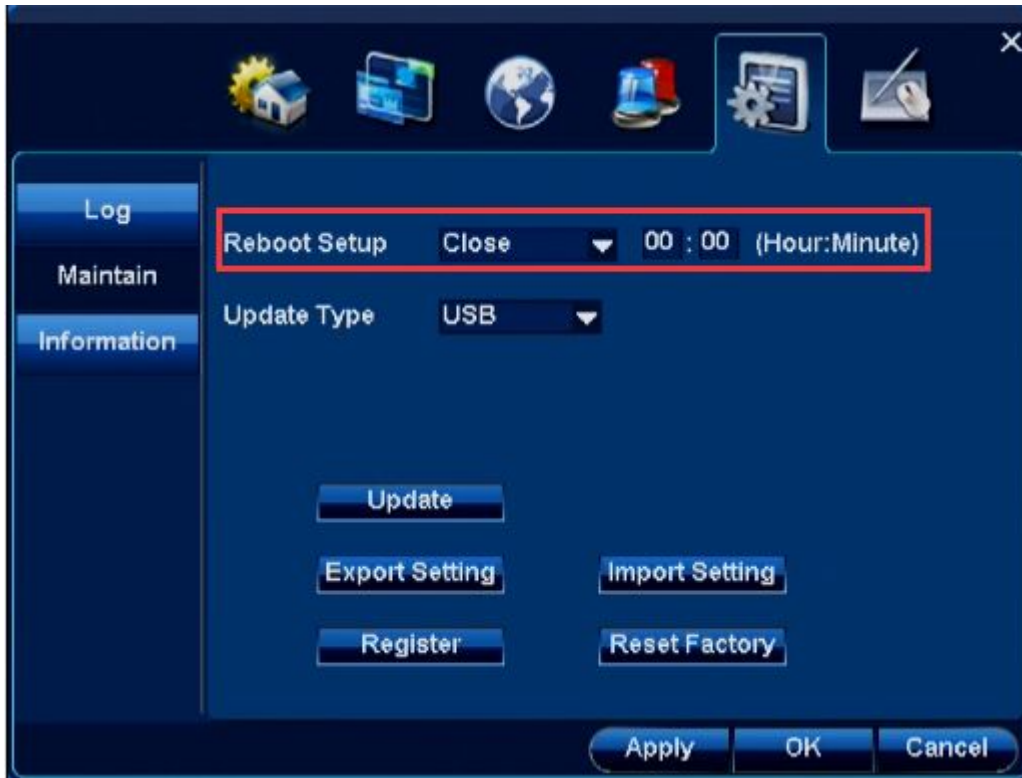
#### 4.5.2 Maintenance

**Function:**

1. Time reboot: This DVR can be set reboot.
2. Software update: U-Disk can be selected for update.
3. Import/Export setting: Export this DVR's setting into U-Disk. Import U-Disk' setting into this DVR.

#### 4.5.2.1 Time Reboot

**Function:** The reboot function is used to prevent from overmuch file fragments. There will be lots of file fragments at DVR system when it is in long-time running.



**Steps:** Enable Time Reboot function

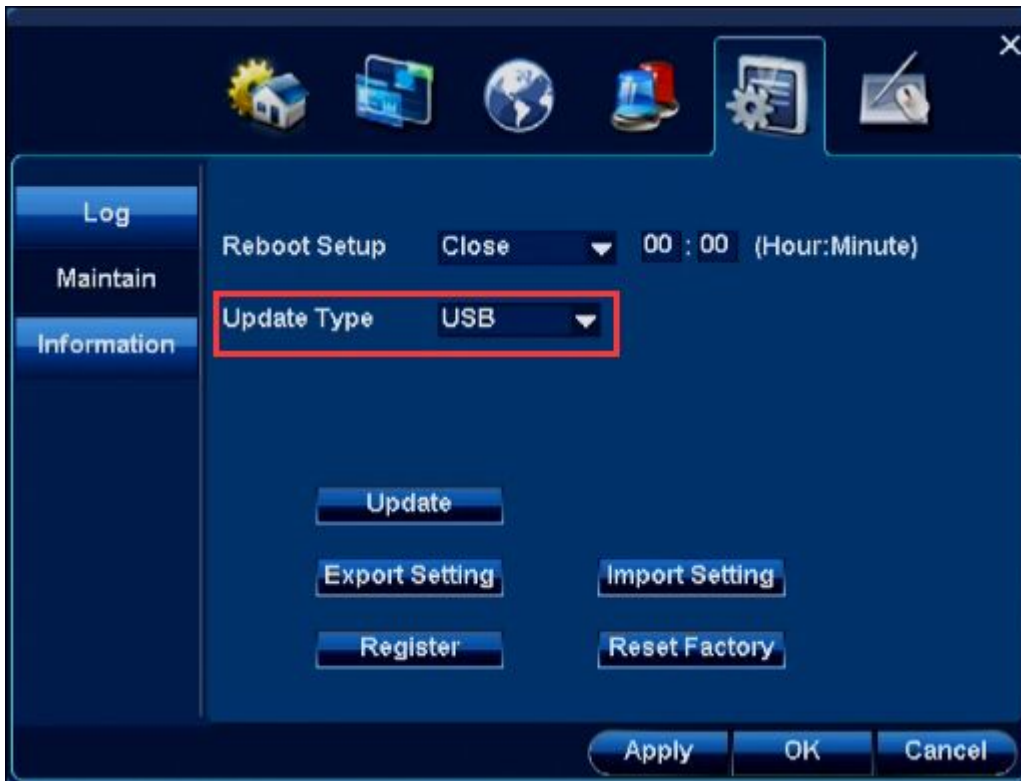
1. Select reboot date at "Reboot Setup". It takes week as standard.

2. Set reboot time, eg, 23:00.
3. Click "Apply" or "OK" to save setting.

#### 4.5.2.2 Software update

**Function:** The software can be updated through USB.

**Note:** When it is updated, the electric power can not be powered off, otherwise it will make the DVR unable to work..



**Steps:**

- 1.Put updated files at FAT32 format U-Disk. These two files should be placed at root directory at U-Disk. Then insert the U-Disk into DVR's USB port.
- 2.Select USB at "Update type".
- 3.Click "Update" button to finish this work.

Note: After update is finished, it will automatically reboot the DVR. When the DVR is started, it is the latest version.

#### **4.5.2.3 Reset factory**

**Function:** All setting at this DVR can be restore factory setting.

Steps: 1. Click "Reset Factory".

2. Click"Ok" at confirmation interface to reboot the DVR and then all original factory settings are restored.

#### **4.5.3 Information**

**Function:** It can be used to query this DVR's serial number, software version's information or hardware version's information,etc.



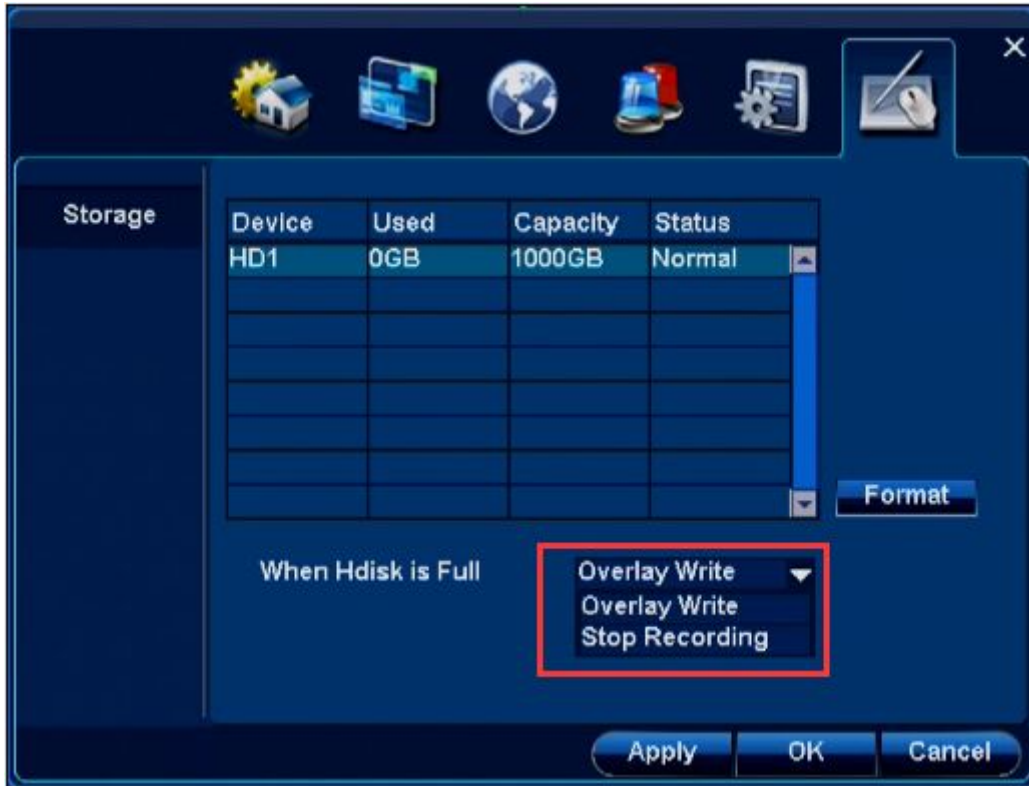
## 4.6 Device

### 4.6.1 Storage

**Function:** 1.Query the inserted magnetic disk or hard disk's working mode.



2.Format inserted hard disk or U-Disk.



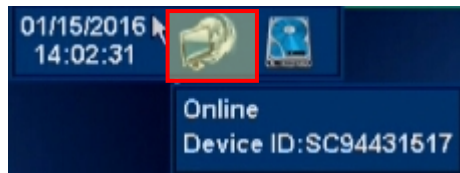
When it is "Hdisk is full", please select "Overwrite" or "Stop Recording".

## 5.CloudSEE Remote Connection

### 5.1 Get CloudSEE ID.

Login DVR system, check the CloudSEE ID and whether the status is online, which means you can use CloudSEE network monitoring system to connect the DVR remotely. You can get CloudSEE ID with the following instructions.

- a. move the mouse to the top middle area of the system interface, the online status and CloudSEE will pop up,



- b. **Right-click menu/main menu - System Setup – Network- Connection**, you can find CloudSEE ID and status here.



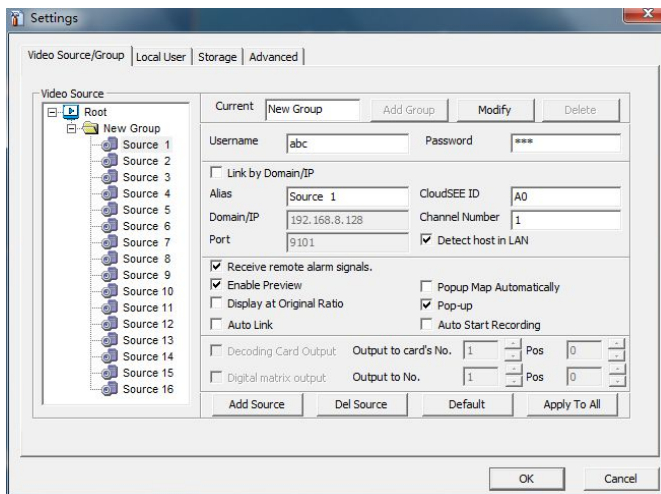
## 5.2 Connect DVR with CloudSEE

1. Install and run CloudSEE, the main view is as shown below.

## User Manual



Click “Settings” on the right function panel , the Settings dialog box appears, you can add new source or edit a source, and input Username, Password, CloudSEE ID, Channel Number, then click OK.



## User Manual


Click “Group”, and select the device just added, right click and select Connect (or double click the source)



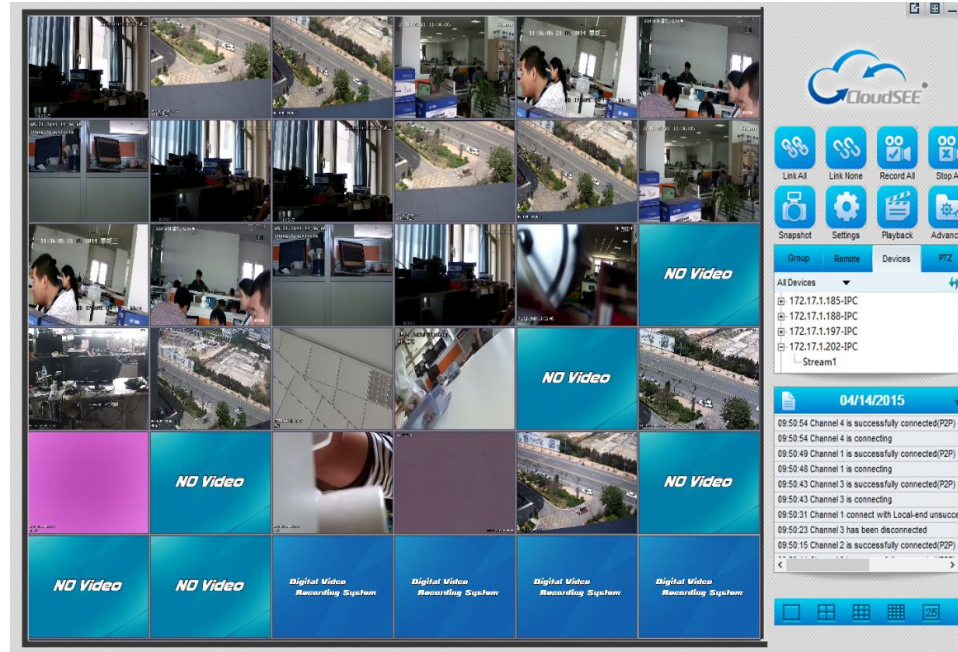
The live view of the camera added will display in the live view window.

## User Manual



If the dvr and PC in the same subnet, the dvr can be searched by clicking **Devices**-, click  to expand, and double click channel number, the channel will be added.

# User Manual



### 5.3 Connect DVR with Smart Phone



**SKYP2P**



**Android Device**



**IOS Device**

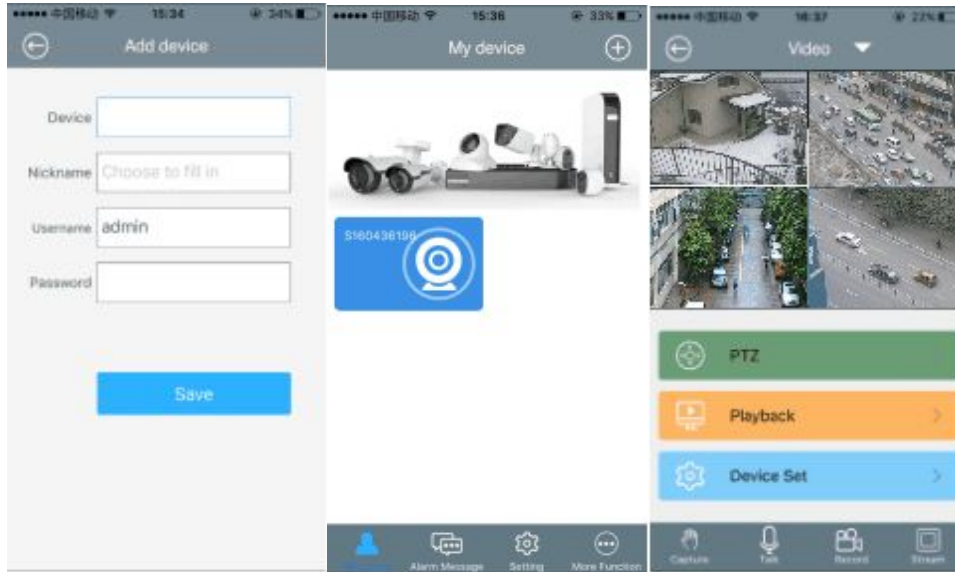
Android users can scan QR code “ Android Device “ to get accurate link downloading android app called SKYP2P or search and install it from Android market or “Google Play” .

Iphone users can scan QR code “ IOS Device “ to get accurate link downloading android app called SKYP2P or search and install it from Iphone” APP Store” .

Username:admin Password:123456



## User Manual



1. Open and run SKYP2P App, Tap +, and select add device.
2. Input Device ID, Username, Password of the device, tap Save
3. The device will be added. Tap the device on the list, live video will display.